

80 STATION ROAD
HAMPTON • MIDDLESEX
TW12 2AX

Dw. No 001

Project - *TRICKLE HILL
RIVER SIDE*
Client - *RICHMOND BOROUGH
COUNCIL*

Detail - *PLANTING PLANS
GRASS BORDERS.*

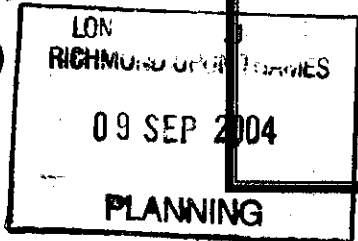
Scale - 1:50

Date - Oct '03.

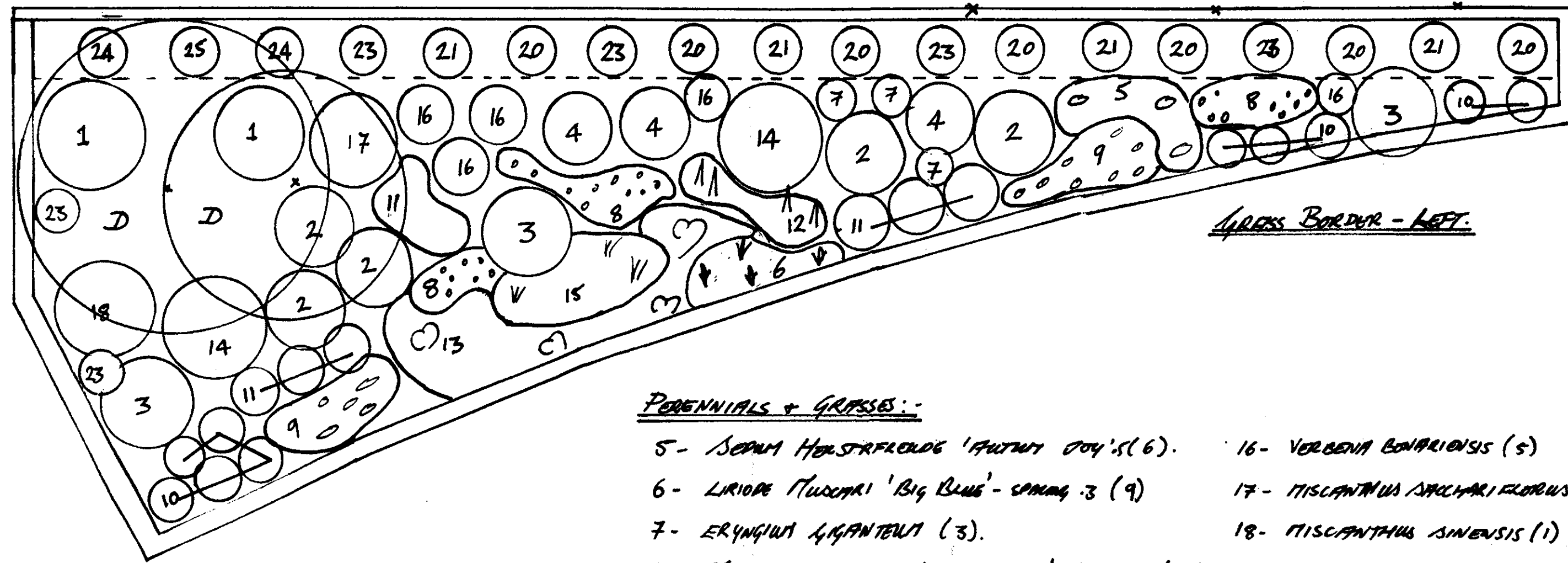
North



t: 020 8979 7878
f: 020 8979 8118
e: info@greenscheme.com
w: www.greenscheme.com



Do Not Scale From Plan



GRASS BORDER - LEFT.

PERENNIALS + GRASSES:-

- | | |
|------------------------------------------------------|-----------------------------------|
| 5- SEDUM HERBSTFREUDE 'AUTUMN JOY'S' (6) | 16- VERBENA BONARIENSIS (5) |
| 6- LIRIOPE MUSCARI 'BIG BLUE' - SPACING .3 (9) | 17- MISCANTHUS SACCHARIFLORUS (1) |
| 7- ERYNGIUM GIGANTEUM (3) | 18- MISCANTHUS SENENSIS (1) |
| 8- ASTER LATIFLORUS 'HORIZONTALIS' SPACING .45 (13) | |
| 9- SEDUM 'RUBY JAPON' SPACING .45 APPROX (16) | |
| 10- HELICHRYSUM ITALICUM (7) | |
| 11- PENNISETUM ORIENTALE .6m APPROX (9) | |
| 12- IRIS 'SABLE' - SPACING .5m APPROX (7) | |
| 13- BERGENIA 'SUNNINGDALE' - SPACING .5 (12) | |
| 14- LORTADERIA SELLOANA 'PUMILA' (2) | |
| 15- FESTUCA GLAUCA 'ELIZABETH BLUE' - SPACING .3 (9) | |

CLIMBERS:-

- 20- TRACHELOSPERMUM DAMINOIDES (7)
- 21- CLEMATIS VITICELLA 'MADAME JULIA' (4)
- 22- ROSA CECLIE BRUNNER-CLIMBING (6)
- 23- ROSA CECLIE BRUNNER-CLIMBING (6)
- 24- HEDERA CANARIENSIS 'GLORIE DE MARENGO' (2)
- 25- HYDRANGEA PETIOLARIS (2)

GRASS BORDER - RIGHT

TREES:-

- B- SALIX FRAGILIS (2)

SHRUBS:-

- 1- MAHONIA x MEDIA CHARITY (2)
- 2- CORNUS ALBA 'ELEGANTISSIMA' (5)
- 3- PHORNIUM TENAX 'SUNDOWNER' (3)
- 4- BUDDLEIA DAVIDII 'BLACK KNIGHT' (4)

PERENNIALS + GRASSES:-

- 5- SEDUM HERBSTFREUDE 'AUTUMN JOY'S' SPACING .5 (11)
- 6- LIRIOPE MUSCARI 'BIG BLUE' - SPACING .3m (12)
- 7- ERYNGIUM GIGANTEUM (7)
- 8- ASTER LATIFLORUS 'HORIZONTALIS' SPACING .45 (14)
- 9- SEDUM 'RUBY JAPON' SPACING .45 APPROX (20)
- 10- HELICHRYSUM ITALICUM (9)
- 11- PENNISETUM ORIENTALE - 6m (6)
- 12- IRIS 'SABLE' - SPACING .5 APPROX (7)

PERENNIALS + GRASSES - CONT.

- 13- BERGENIA 'SUNNINGDALE' - SPACING .5 (16)
- 14- LORTADERIA SELLOANA 'PUMILA' (2)
- 15- FESTUCA GLAUCA 'ELIZABETH BLUE' .3 (14)
- 16- VERBENA BONARIENSIS (6)
- 17- MISCANTHUS SACCHARIFLORUS (2)
- 18- MISCANTHUS SENENSIS (1)

CLIMBERS:-

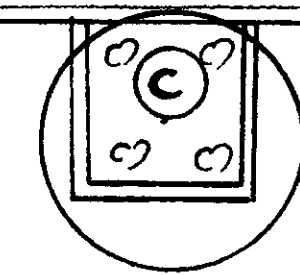
- 20- TRACHELOSPERMUM DAMINOIDES (9)
- 21- CLEMATIS VITICELLA 'MADAME JULIA CORREYON' (5)
- 23- ROSA CECLIE BRUNNER-CLIMBING (4)
- 24- HEDERA CANARIENSIS 'GLORIE DE MARENGO' (2)
- 25- HYDRANGEA PETIOLARIS (2)

TREES:-

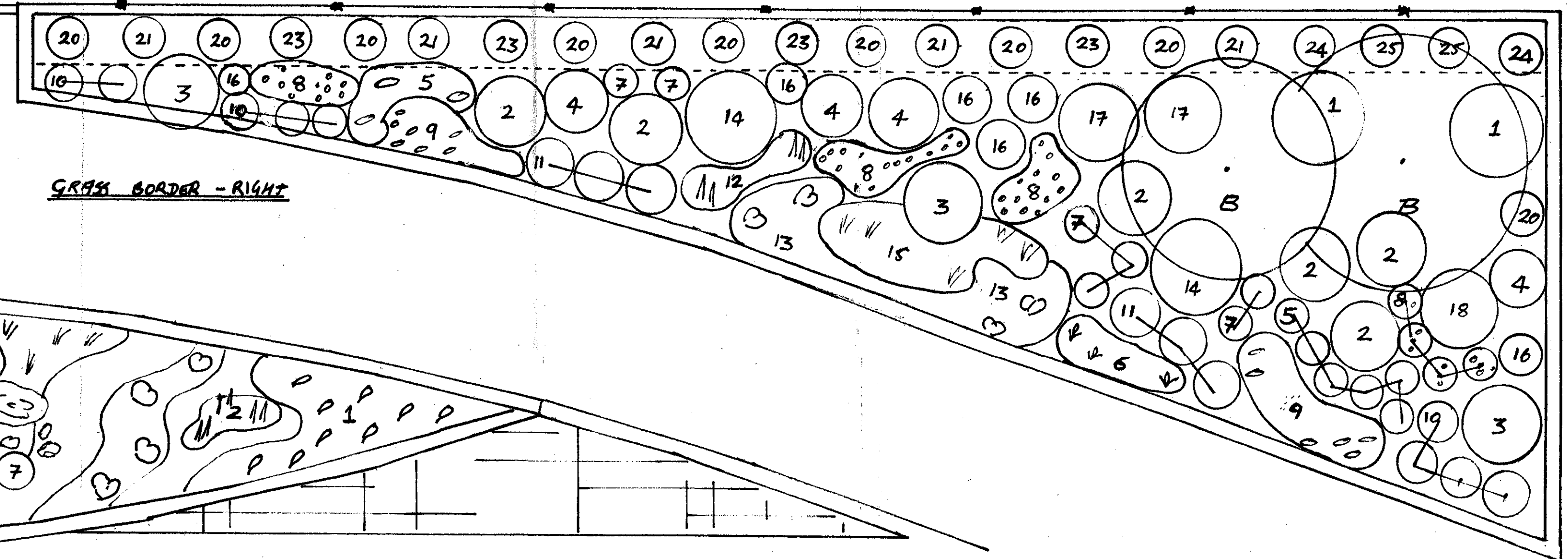
- D- BETULA PENDULA 'LACINATA' (2)

SHRUBS:-

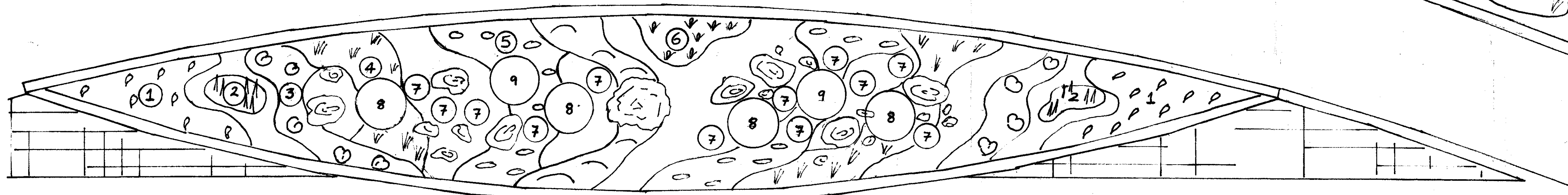
- 1- MAHONIA x MEDIA CHARITY (2)
- 2- CORNUS ALBA 'ELEGANTISSIMA' (5)
- 3- PHORNIUM TENAX 'SUNDOWNER' (3)
- 4- BUDDLEIA DAVIDII 'BLACK KNIGHT' (3)



CENTRAL GRASS BORDER



GRASS BORDER - RIGHT



ADDITIONAL ITEMS:-

- (C) SELECTION OF LARGE BOLLERS
- (P) + STONES SET IN GRAVEL BED

TREE:-

- C- ALNUS RUBRA (RAISED CENTRAL PLANTER)
- UNDERPLANTING OF BERGENIA - SET 3.

PERENNIALS + GRASSES:-

- 1- PENNISETUM ORIENTALE - SPACING .6m APPROX (16)
- 2- IRIS 'SABLE' - SPACING .5m APPROX (13)
- 3- BERGENIA 'SUNNINGDALE' - SPACING .5m APPROX (30)
- 4- FESTUCA GLAUCA 'ELIZABETH BLUE' - SPACING .3 APPROX (36)
- 5- SEDUM HERBSTFREUDE 'AUTUMN JOY' - SPACING .6m (36)
- 6- LIRIOPE MUSCARI 'BIG BLUE' - SPACING .3m (20)
- 7- ERYNGIUM GIGANTEUM (12)

SHRUBS:-

- 8- PHORNIUM TENAX 'SUNDOWNER' (4)
- 9- CORNUS ALBA ELEGANTISSIMA (2)

RULES:-

- TO ALL GRASS BORDERS MID + FORE FRONT -
- PLANTED IN SPACES IN BETWEEN SHRUBS + PERENNIALS.
- ERYNGIUM GIGANTEUM - SPACING 15-30cm (150)
- MUSCARI PRATENSICUM 'BLUE SPIKE' - SPACING 10cm (500)