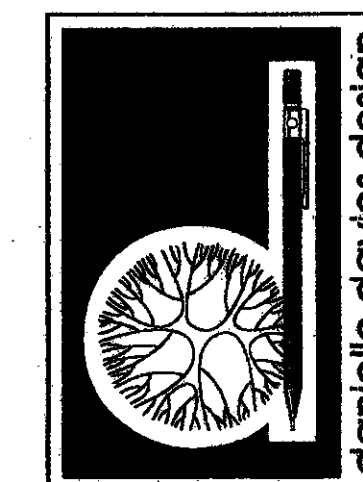


03/11/11/ DD1



8 BIRCHWOOD GROVE  
HAMPTON  
MIDDLESEX  
TW12 3DU

DN. No 003

Project - TWICKENHAM  
RIVERIDE

Client - Richmond Borough  
Council

Detail - PLANTING PLAN  
GRASS BORDERS -  
ELEVATED SECTION

Scale - 1:50

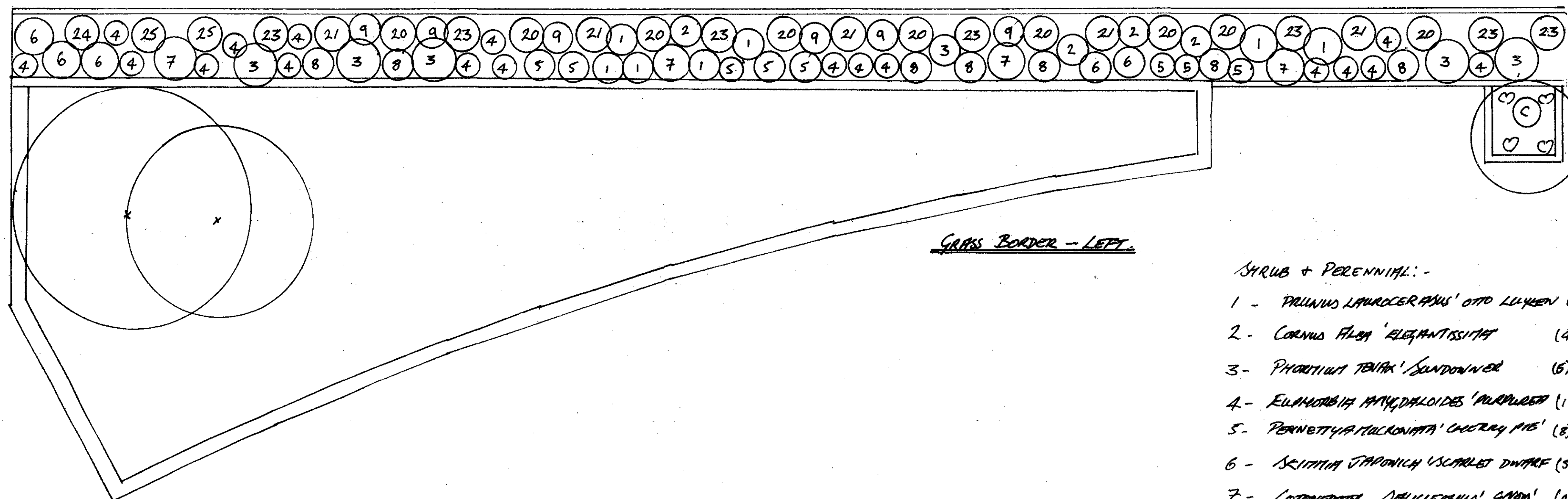
Date - 15<sup>th</sup> APRIL '04.

North  
N

LONDON PLANNING  
09 SEP 2004  
PLANNING

T. 020 8979 7875  
F. 020 8979 7875  
info@greenscheme.com  
www.greenscheme.com

Do Not Scale From Plan



GRASS BORDER - LEFT

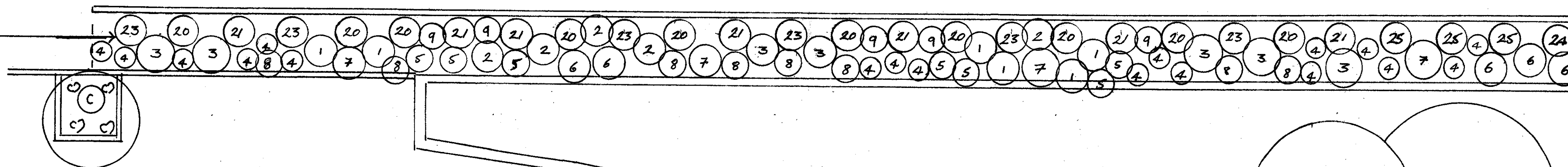
SHRUB + PERENNIAL:-

- 1 - PRUNUS LAUROCEPES 'OTTO LUYKEN' (7)
- 2 - CORNUS FLOR 'ELEGANTISSIMA' (4)
- 3 - PIERIS LITTLE 'SANDWICH' (6)
- 4 - EUPHORBIA MYRSINOIDES 'PURPUREA' (18)
- 5 - PERNETTYA MUCRONATA 'CHERRY PIE' (8)
- 6 - SCILLA JAPONICA 'SCARLET DWARF' (5)
- 7 - LOTONBASTER SALICIFOLIUS 'GNOM' (4)
- 8 - STACHYS BYZANTINA (8)
- 9 - ERYNGIUM GIGANTEUM (6)

ALIBERBS:-

- 20 - TRACHYLOSPERUM DISTACHYOIDES (9)
- 21 - CLETTARIA VITICELLA 'MADAM LORREYON' (5)
- 23 - ROSA CECLIE BRUNNER (CLATSING) (7)
- 24 - HEDERA CANARIENSIS 'GLOIRE DE STANGE' (1)
- 25 - HYDRANGEA PETIOLARIS (2)

TIMER HOARDINGS  
SET BACK IN DROPP  
FROM BRICK WALL - TO  
ALLOW FOR FUTURE  
PLANTING OF CLIMBERS +  
SHRUBS etc.



GRASS BORDER - RIGHT

SHRUB + PERENNIAL:-

- 1 - PRUNUS LAUROCEPES 'OTTO LUYKEN' (6)
- 2 - CORNUS FLOR 'ELEGANTISSIMA' (6)
- 3 - PIERIS LITTLE 'SANDWICH' (7)
- 4 - EUPHORBIA MYRSINOIDES 'PURPUREA' (18)
- 5 - PERNETTYA MUCRONATA 'CHERRY PIE' (7)
- 6 - SCILLA JAPONICA 'SCARLET DWARF' (5)
- 7 - LOTONBASTER SALICIFOLIUS 'GNOM' (4)
- 8 - STACHYS BYZANTINA (8)
- 9 - ERYNGIUM GIGANTEUM (5)

ALIBERBS:-

- 20 - TRACHYLOSPERUM DISTACHYOIDES (10)
- 21 - CLETTARIA VITICELLA 'MADAME LORREYON' (7)
- 23 - ROSA CECLIE BRUNNER (CLATSING) (6)
- 24 - HEDERA CANARIENSIS 'GLOIRE DE STANGE' (1)

SEE: PLANTING PLANS  
GRASS BORDERS.  
OCT 03 FOR DETAIL &  
LEGEND OF THIS AREA.