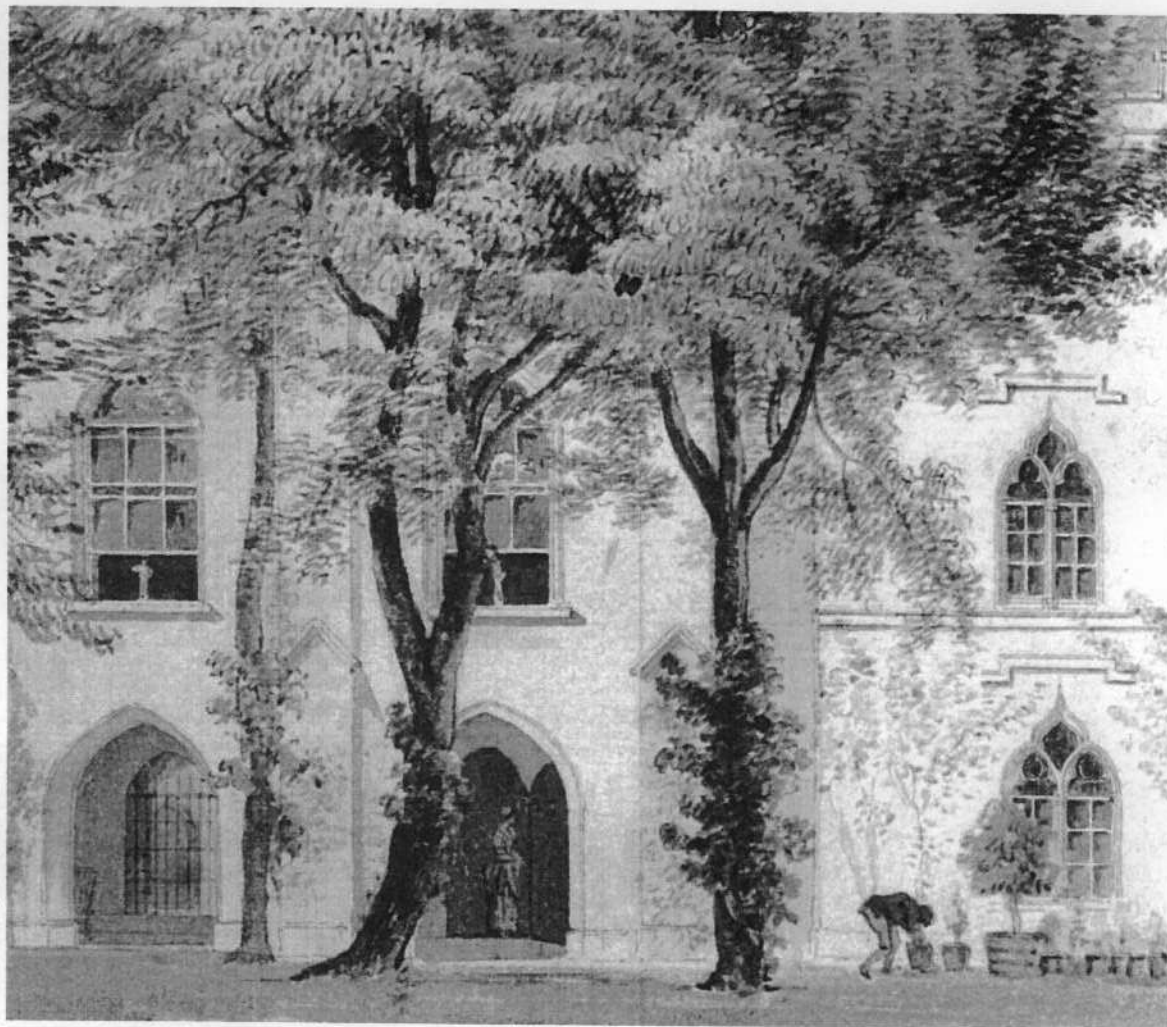
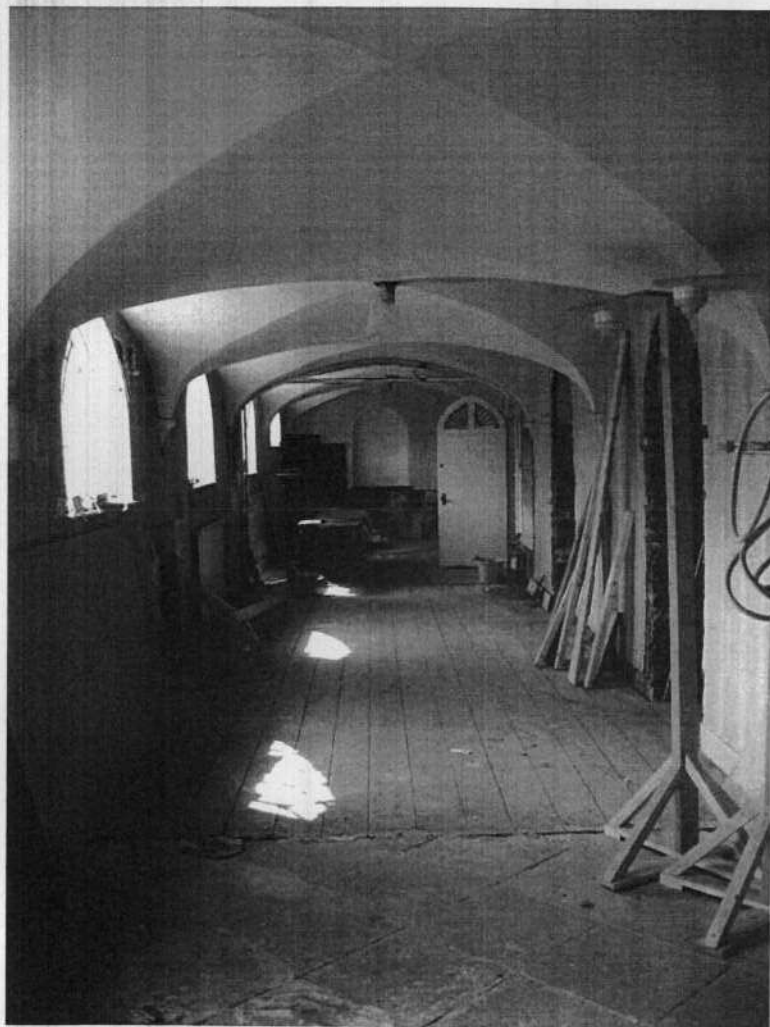
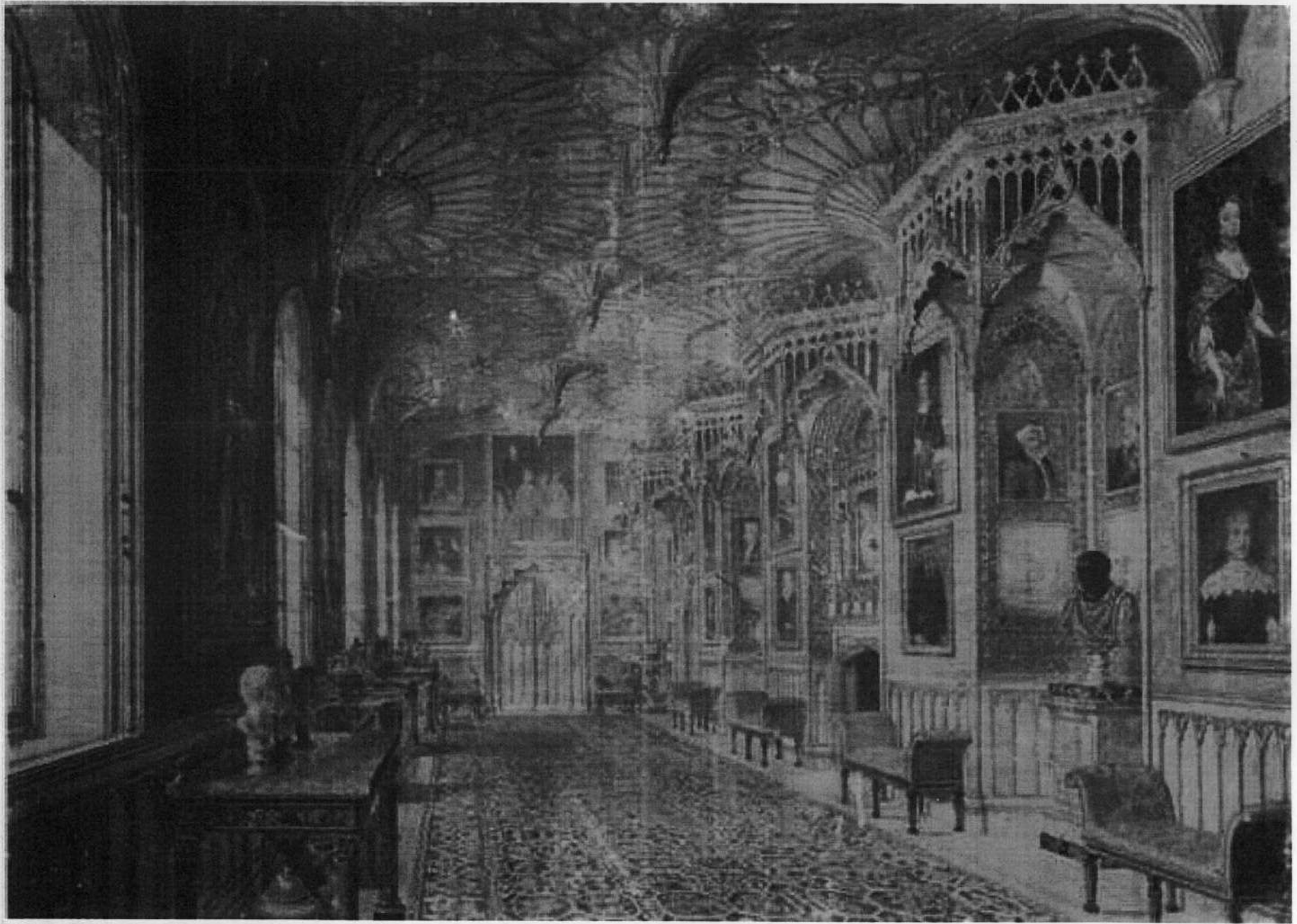


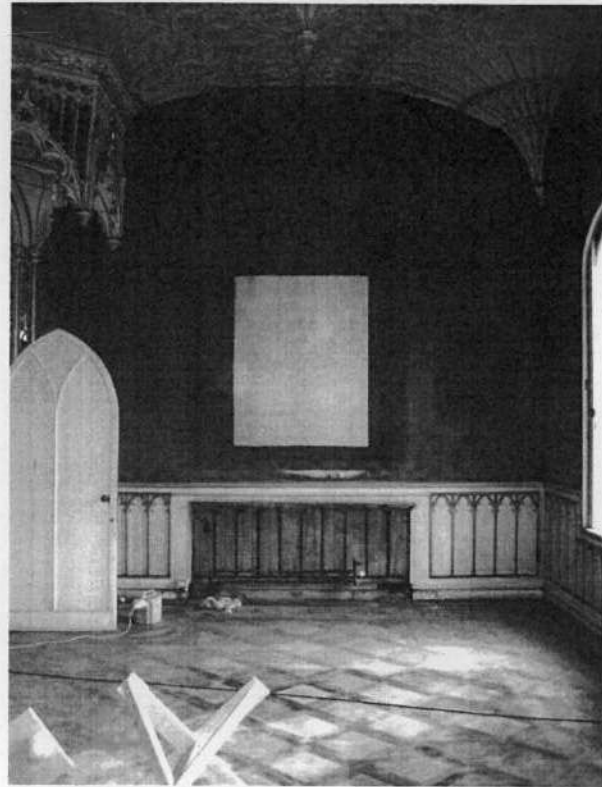
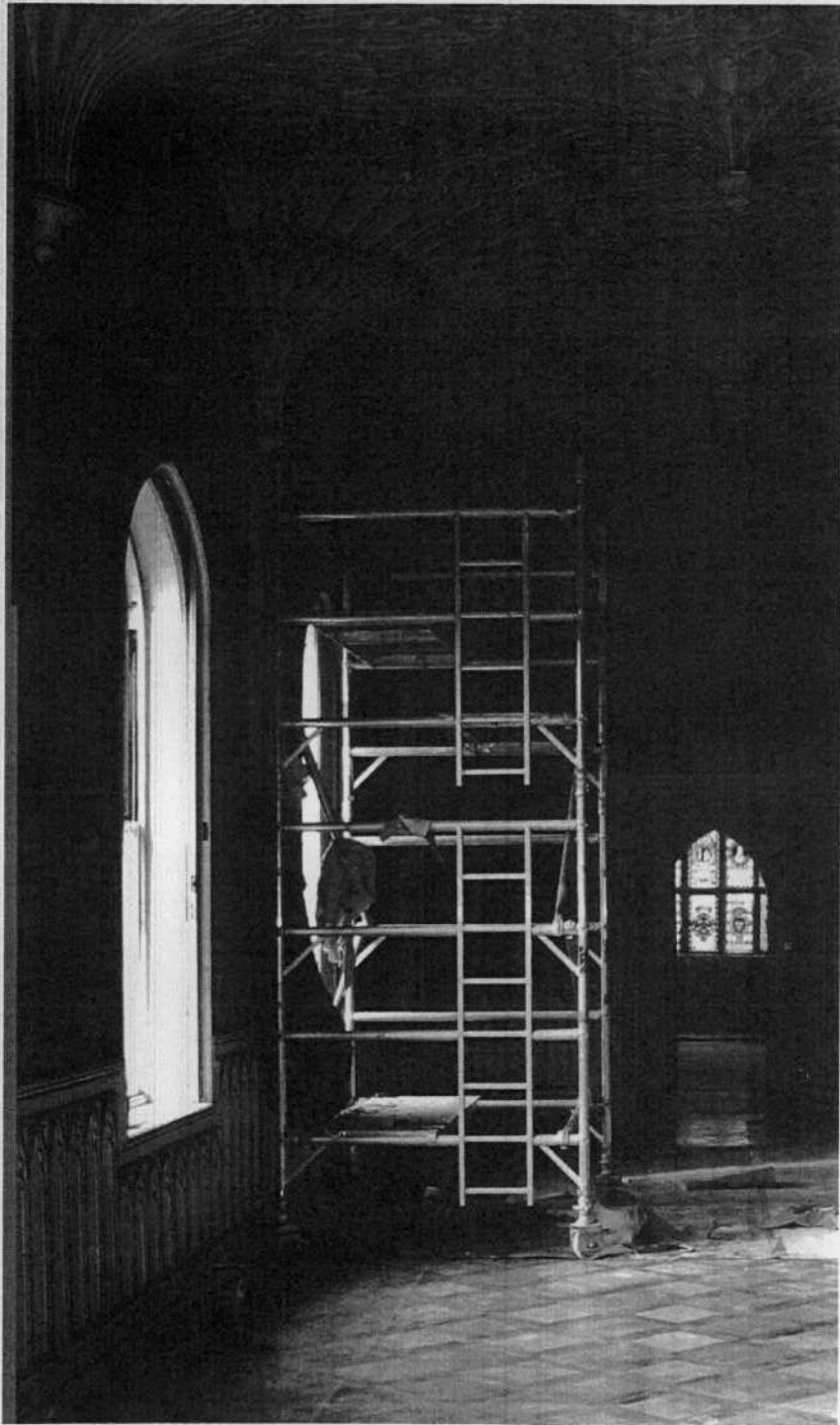
RESTORATION OF THE DOUBLE-GALLERY

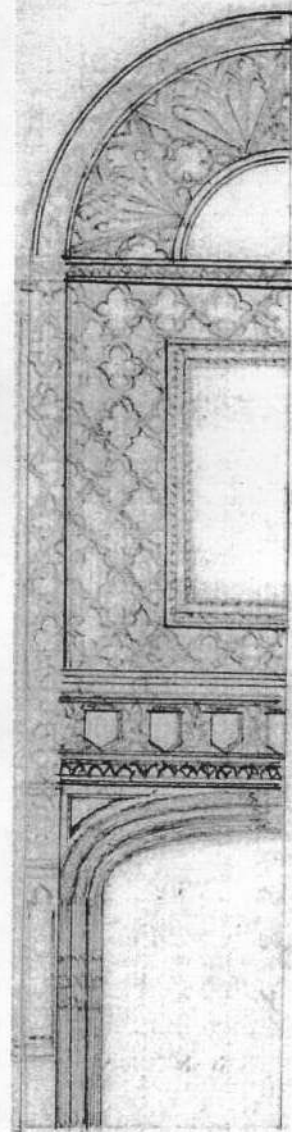
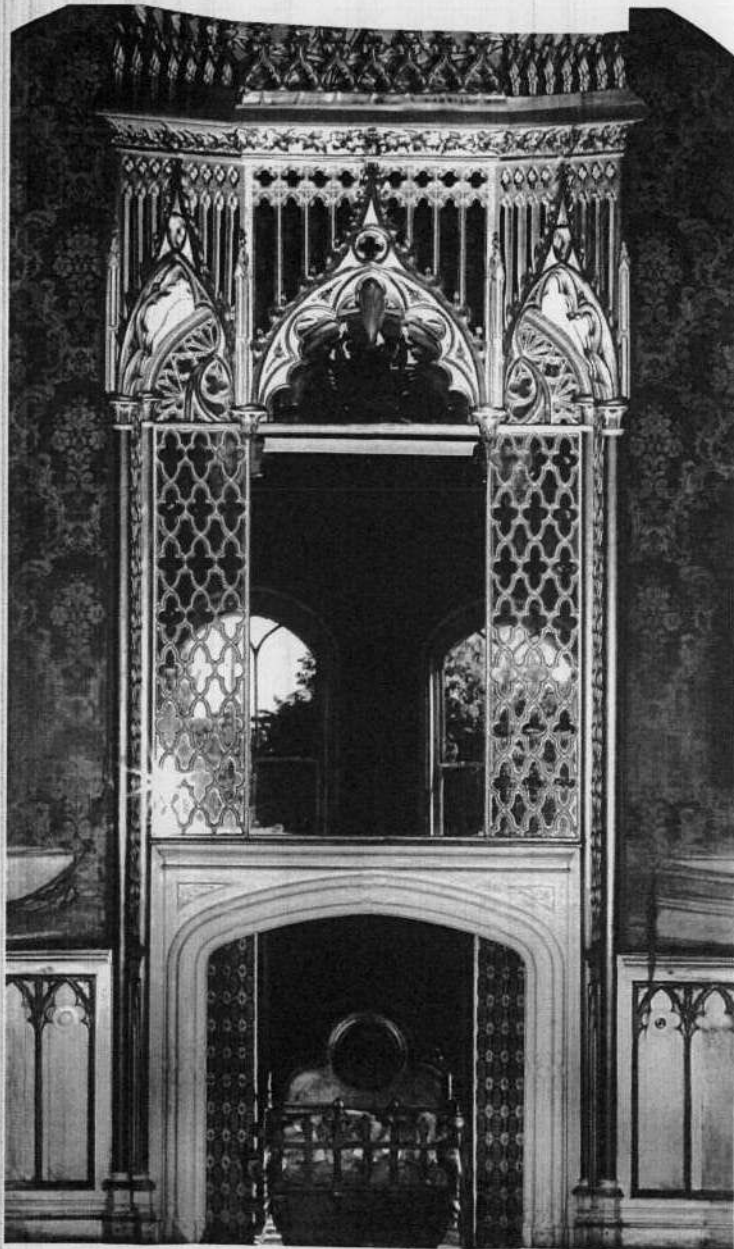
Alteration	Historic Context	Works and Justification
<p>Provide a tea room in the Great Cloister (G8) and restore the arched openings to the Great Cloister and install new glazed doors to facilitate new use as tea room.</p>	<p>1758 The Great Cloister designed as part of the new rooms to the west forming a circuit of state rooms at first floor level. The sequence of brightly decorated State Apartments were contrasted with consciously austere, plain painted Back Stairs and Great Cloister.</p> <p>1762 Great Cloister completed with five bays, pierced with arches opening directly into the pleasure ground.</p> <p>1820s The arches bricked up and the Great Cloister divided into three rooms used as a dressing room, bedroom and housekeeper's room.</p> <p>1962 Partitions demolished, western partition rebuilt.</p> <p>2006 Listed Building consent given to remove 1962 partition and reinstate articulation of bays and internal windows.</p>	<p>(Consent given for restoration of the internal windows and doors on the north wall)</p> <p>(Consent given for the removal of all subdivisions)</p> <p>(Consent given for the restoration of the niche at the east and west ends of the Cloister.)</p> <p>The development of the design has relocated the tea room from the Waiting Room and China Room at the east end of the house to the Great Cloister where the Beer Cellar can serve as the food preparation area.</p> <p>The Great Cloister is at the end of the historic route through the house.</p> <p>The generation of income through a tea room is essential for generating an income.</p> <p>Dismantle iron window sets will be retained.</p>



<p>Gallery (F11) Modification of the window design to the Gallery F11 in the light of new evidence .</p>	<p>1758 Alternative designs by Richard Bentley and John Chute for the creation of a new picture Gallery. 1765 Decoration completed and the hanging of the pictures. 1784 Thomas Sandby and Edward Edwards view 1788 John Carter's view 1842 Pictures and contents sold including the built in pictures of the north wall set within a framework of giltwood and mirror plate. 1855-7 Windows lowered with redecoration of the Gallery. 1860s At that time the upper part of the overmantel was removed and the picture compartments were resized for a new commission of portraits by Sant. 1883 The pictures introduced in 1860s and built into the north wall removed and all contents sold at auction.</p>	<p>(Consent given for new windows reinstating rectangular panes of glass with heraldic glass at its head) (Consent given for the restoration of the doors to the West Wall.) (Consent given for the removal of the radiator.) The revision of the design for the south window wall is based on new archival evidence confirming the original dimensions of the windows. The alteration of the design allows the authentic restoration of the windows. The new archival evidence is supported by a visual analysis of the building and confirmed by paint analysis. The removal of the later fabric is justified by revealing the earlier layer which is of greater significance.</p>
<p>Restoration of joinery and network to overmantel and to the picture recesses</p>	<p>1925+ Further alteration of the chimneypiece, removal of mantelshelf.</p>	<p>(Consent given for the reinstatement of the mantelshelf to the chimneypiece.) The development of the design is based the reinstatement of pictures to the north wall. The alteration of the proposal will authentically restore the original 1765 design for the north wall.</p>
<p>Heating</p>		<p>The revision of the services for the room reflects its dual use as both show room and occasional use for corporate entertainment. The trench heaters will be placed at the east and west ends of the rooms within the plain oak margin and within the picture niche either side of the chimneypiece.</p>









Alteration	Historic Context	Works and Justification
Waiting Parlour (Shop) G13 D3:	<p>1700 Door frame constructed as part of pre-Walpole house.</p> <p>1860s Door leaf renewed, lock set salvaged from earlier doorleaf</p> <p>1920s Door furniture renewed.</p>	<p>Dismantle C20 door to store to facilitate circulation within new shop. The dating of the door was established using paint analysis.</p> <p>The retail operation is key to supporting the operation of the house as a single building preservation trust. Rooms G13 and G14 have are on a small scale. The dismantling of the door allow much needed display space for the retail facility.</p>