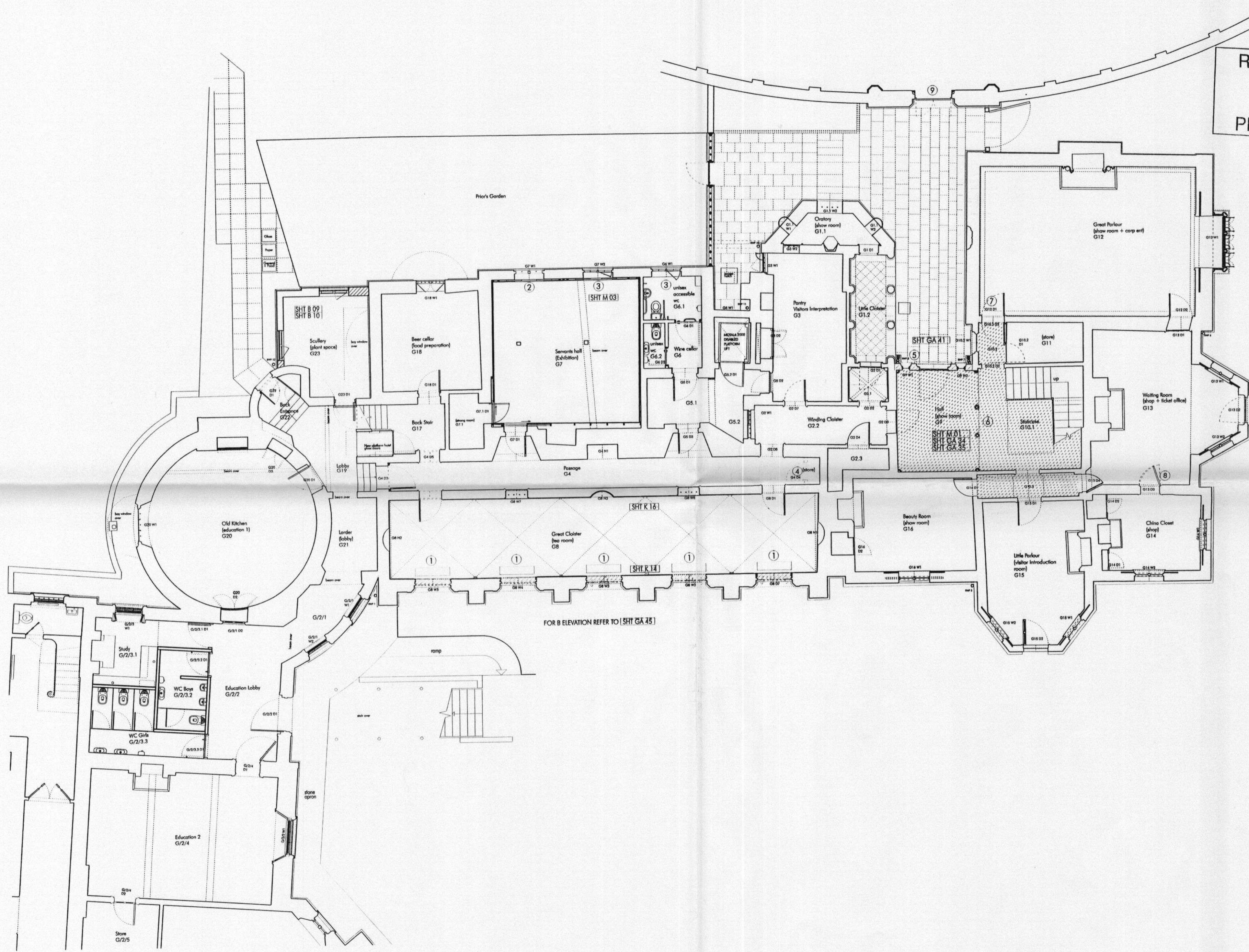


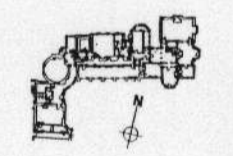
09/0782/LBC

RECEIVED
- 2 APR 2009
PLANNING



- ① Dismantle iron windows to store. Remove redundant shutter boxes etc. Remove walling below window. Omit floor grilles and trench heaters.
- ② G7 W1: dismantle 1760 window frame set incl security bars for repositioning to original config.
- ③ G6 W1 and G7 W2: remove C20 timber casement and infill to frames in order to restore original sit of window. Dismantle iron bars for repositioning.
- ④ Dismantle partition and doorset to reinstate in o location.
- ⑤ Carefully dismantle 1958 north wall facing Entrc (altered 1972) to facilitate restoration to original based upon new documentary evidence. Dismantle windows G9 W1/W2 to store. Temporarily dismantle entrance door G9 D1.
- ⑥ Record and carefully lift acoustic and plain tile in 1959 for relaying in G3. Remove 1950s slab. Record and dismantle cast 1860s enrichments fr ceiling to Hall. Retain plain plaster ceiling. Temporary prop of ceiling to facilitate dismantl and rebuilding.
- ⑦ Dismantle 1860s enrichments on doors (of varic composition, softwood and plaster). Set aside dismantled ornament for museum, interpretator to store. First floor: G10.2 D1 and G12 D1.
- ⑧ Dismantle 20th century door leaf to store to faci access and security.
- ⑨ Dismantle 1959 mild steel gate for re-use to ga

SHT * REFER TO DRAWING NC
 [Hatched] DISMANTLING
 [Cross-hatched] REINCORPORATION/STC



Heritage
LOTTERY FUNDED

THIS DRAWING IS COPYRIGHT PETER INSKIP + PETER JENKINS ARCHITECT
 MUST NOT BE USED FOR PURPOSES OTHER THAN IN RELATION TO THIS
 UNLESS AUTHORIZED BY THE PRACTICE
 THIS DRAWING MUST NOT BE SCALED - WORK TO FIGURED DIMENSION
 THIS DRAWING MUST BE READ IN CONJUNCTION WITH THE SPECIFICAT

DATE	REVISION	COMMENT
12.08.09	C	LBC & PLANNING
08.05.06	F	FOR LBC + PLANNING APPROVAL

WALPOLE'S VILLA
 STRAWBERRY HILL HC
 TITLE
 GROUND FLOOR PLAN AS APPROVED 08/04/06 + 08/3453 & WITH STRIP OUT

DWG NO SHT GA 010 SCALE 1:10 DATE MA