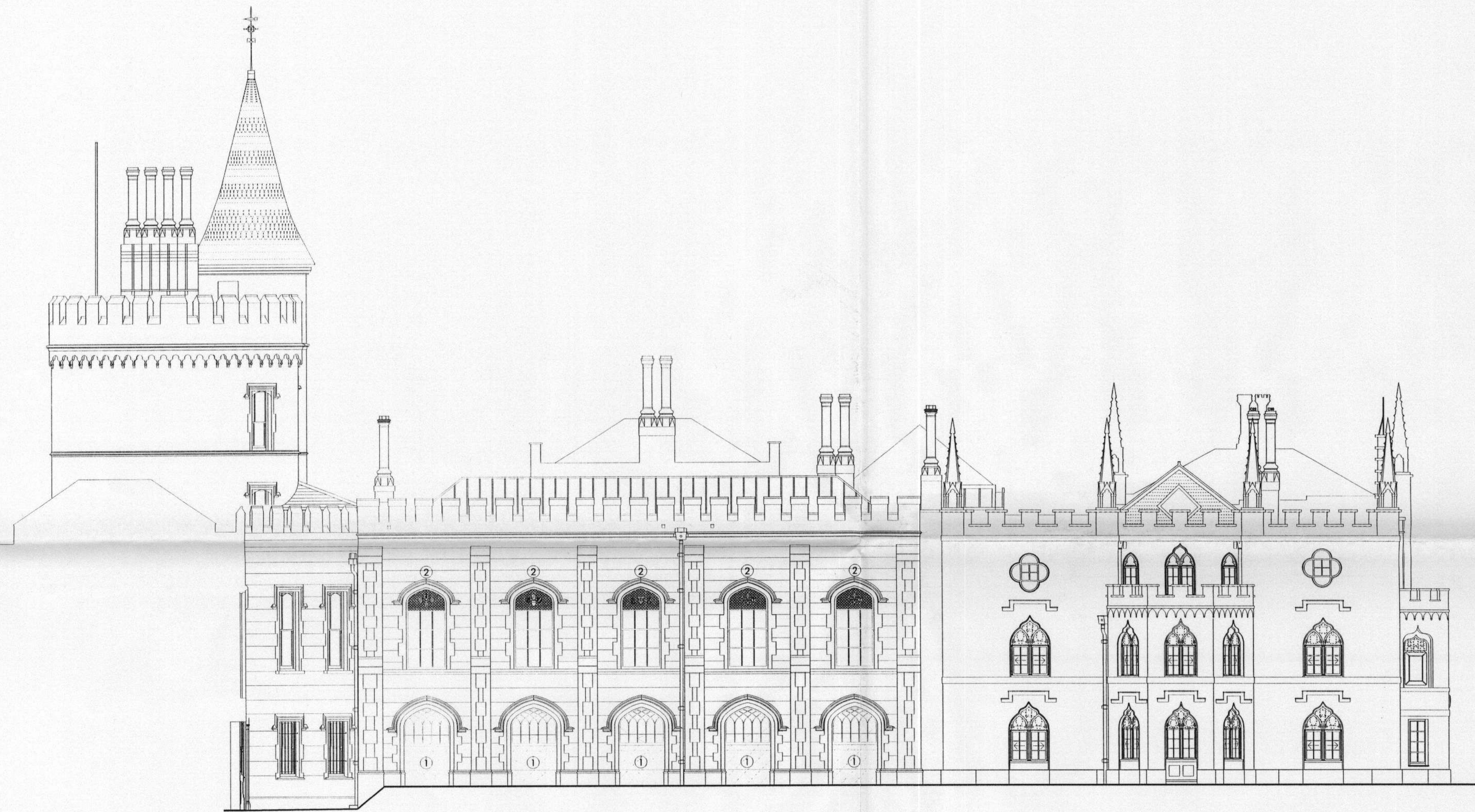


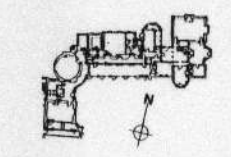
09/0782/LBC

RECEIVED
 2 APR 2009
 PLANNING



- ① Dismantle iron windows GB W1 -5 to store. Remove redundant shutter boxes etc. Remove rendered brickwalling below windows to restore arched openings.
- ② Dismantle sash window joinery for reduction to original size and configuration based on new evidence.

 DISMANTLING
 REINCORPORATION/STORAGE



 Heritage
 LOTTERY FUNDED

THIS DRAWING IS COPYRIGHT PETER INSKIP + PETER JENKINS ARCHITECTS LTD AND
 MUST NOT BE USED FOR PURPOSES OTHER THAN IN RELATION TO THIS PROJECT
 UNLESS AUTHORIZED BY THE PRACTICE
 THIS DRAWING MUST NOT BE SCALED - WORK TO FIGURED DIMENSIONS ONLY
 THIS DRAWING MUST BE READ IN CONJUNCTION WITH THE SPECIFICATION

0 1 2 3 4 5 m

DATE	REVISION	COMMENT	AUTHOR	AUTHORIZED
12.03.09	C	LIC & PLANNING	CT	SO
08.05.06	J	FOR LIC + PLANNING APPROVAL	JB	SO

WALPOLE'S VILLA
STRAWBERRY HILL HOUSE

TITLE
 SOUTH ELEVATION AS APPROVED 06/1626
 + 08/3453 & WITH STRIP OUT

DWG NO SHT GA 44 SCALE 1:100 @ A2 DATE MAY 2006

PETER INSKIP + PETER JENKINS ARCHITECTS LTD
 19 - 23 WHITE LION STREET LONDON N1 9PD
 TELEPHONE 020 7322 4000 FAX 020 7322 5242