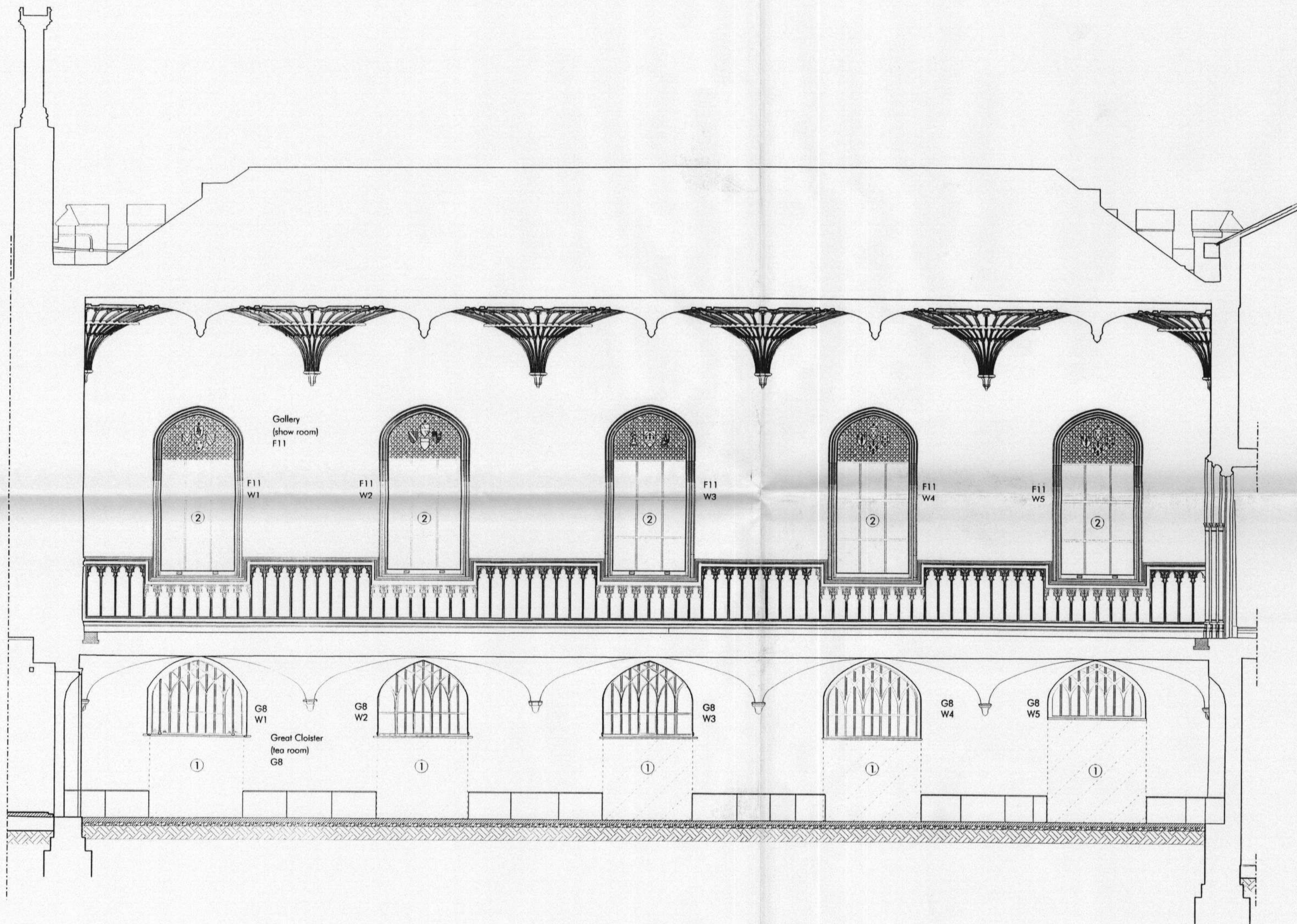


RECEIVED
 2 APR 2009
 PLANNING

09/0782/LBC

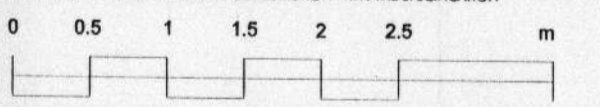


- ① Dismantle iron windows to store and for interpretation use. Remove redundant shutter boxes. Remove walling below windows to restore as openings.
- ② Dismantle sash windows for reduction to reduced size. Dismantle reveal lining. Dismantle shutters for reduction to original size.
- ③ Take up oak floor boards against west + east walls and in north niches for new trench convactor heaters.

DISMANTLING
 REINCORPORATION/STORAGE



THIS DRAWING IS COPYRIGHT PETER INSKIP + PETER JENKINS ARCHITECTS LTD AND MUST NOT BE USED FOR PURPOSES OTHER THAN IN RELATION TO THIS PROJECT UNLESS AUTHORIZED BY THE PRACTICE. THIS DRAWING MUST NOT BE SCALED - WORK TO FIGURED DIMENSIONS ONLY. THIS DRAWING MUST BE READ IN CONJUNCTION WITH THE SPECIFICATION.



DATE	REVISION	COMMENT	AUTHOR	AUTHORIZED
12-03-07	C	LBC & PLANNING		SG

**WALPOLE'S VILLA
 STRAWBERRY HILL HOUSE**

TITLE
 SECTION B-B AS APPROVED 06/1626 + 08/3453
 & WITH STRIP OUT

DWG NO SHT K 14 SCALE 1:50 @A2 DATE JUL 2008

PETER INSKIP + PETER JENKINS ARCHITECTS LTD
 19 - 23 WHITE LION STREET LONDON N1 9PD
 TELEPHONE 020 7833 4002 FAX 020 7278 5343