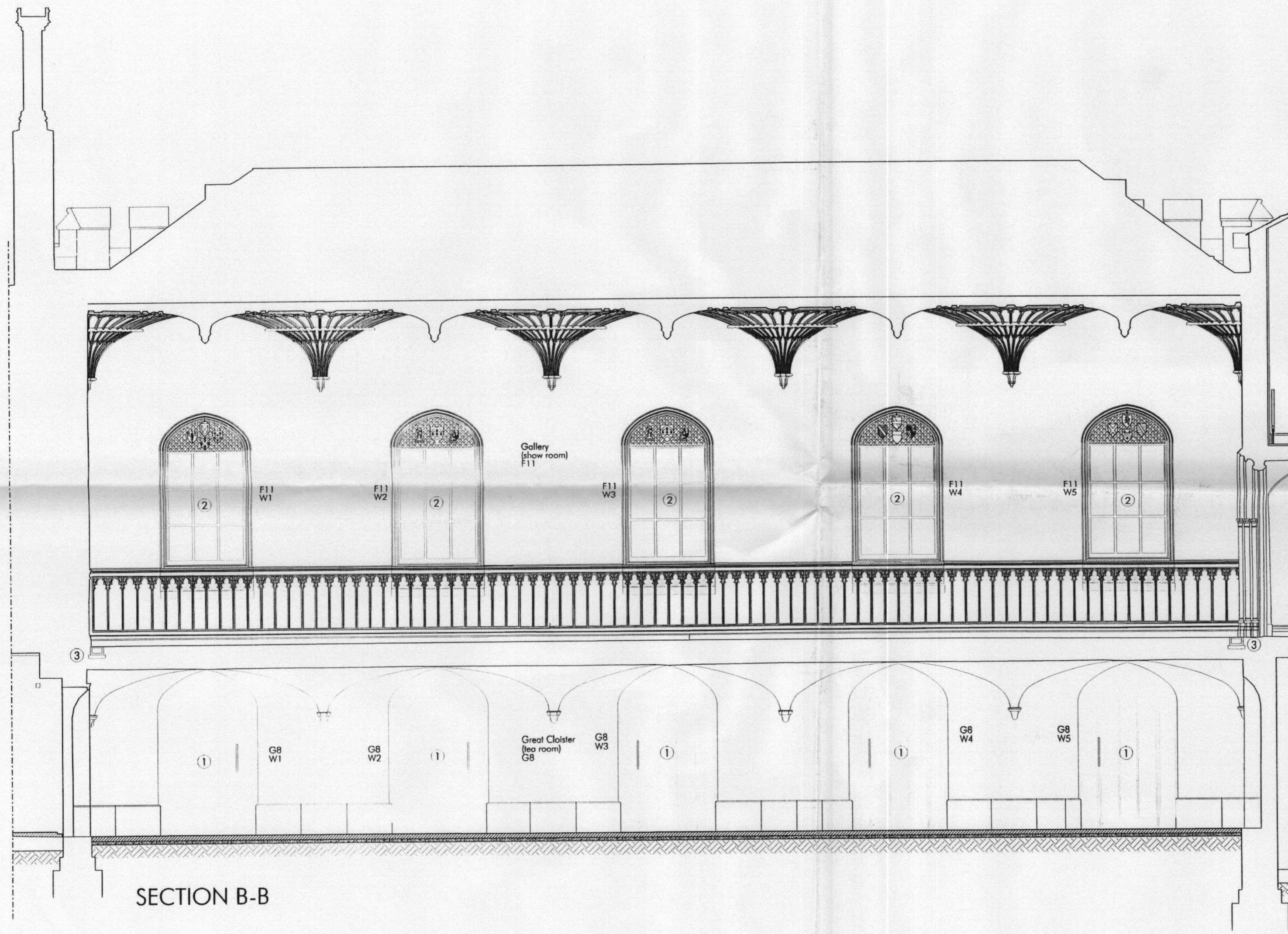


RECEIVED  
 - 2 APR 2009  
 PLANNING

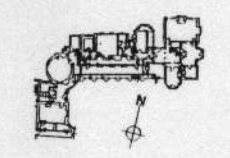
09/0782/LBC



SECTION B-B

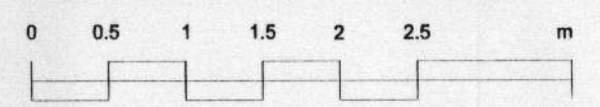
- ① New glazed doors and sidelights.
- ② Reinstall dado panelling on south wall below windows F11 W1-W5 to original level. Reinstall Gothic tracery to dado below windows following raising of rail. F11 W1-W5: oak windows reduced to original size. Internal joinery reduced to original size.
- ③ New trench heaters and brass grilles to match grille in Library F6.

RECONSTRUCTION  
 ALTERATION  
 REINCORPORATION



Heritage  
 LOTTERY FUNDED

THIS DRAWING IS COPYRIGHT PETER INSKIP + PETER JENKINS ARCHITECTS LTD AND MUST NOT BE USED FOR PURPOSES OTHER THAN IN RELATION TO THIS PROJECT UNLESS AUTHORIZED BY THE PRACTICE. THIS DRAWING MUST NOT BE SCALED - WORK TO FIGURED DIMENSIONS ONLY. THIS DRAWING MUST BE READ IN CONJUNCTION WITH THE SPECIFICATION.



DATE	REVISION	COMMENT	AUTHOR	AUTHORIZED
13.03.07	C	LBC & PLANNING	CF	SI

WALPOLE'S VILLA  
 STRAWBERRY HILL HOUSE

TITLE  
 SECTION B-B AS APPROVED 06/1626 + 08/3453  
 & WITH ALTERATIONS

DWG NO SCALE 1:50 @A2  
 SHT K 15 DATE JUL 2008

PETER INSKIP + PETER JENKINS ARCHITECTS LTD  
 19 - 23 WHITE LION STREET LONDON N1 9PD  
 TEL: 020 7728 5343 FAX: 020 7728 5343