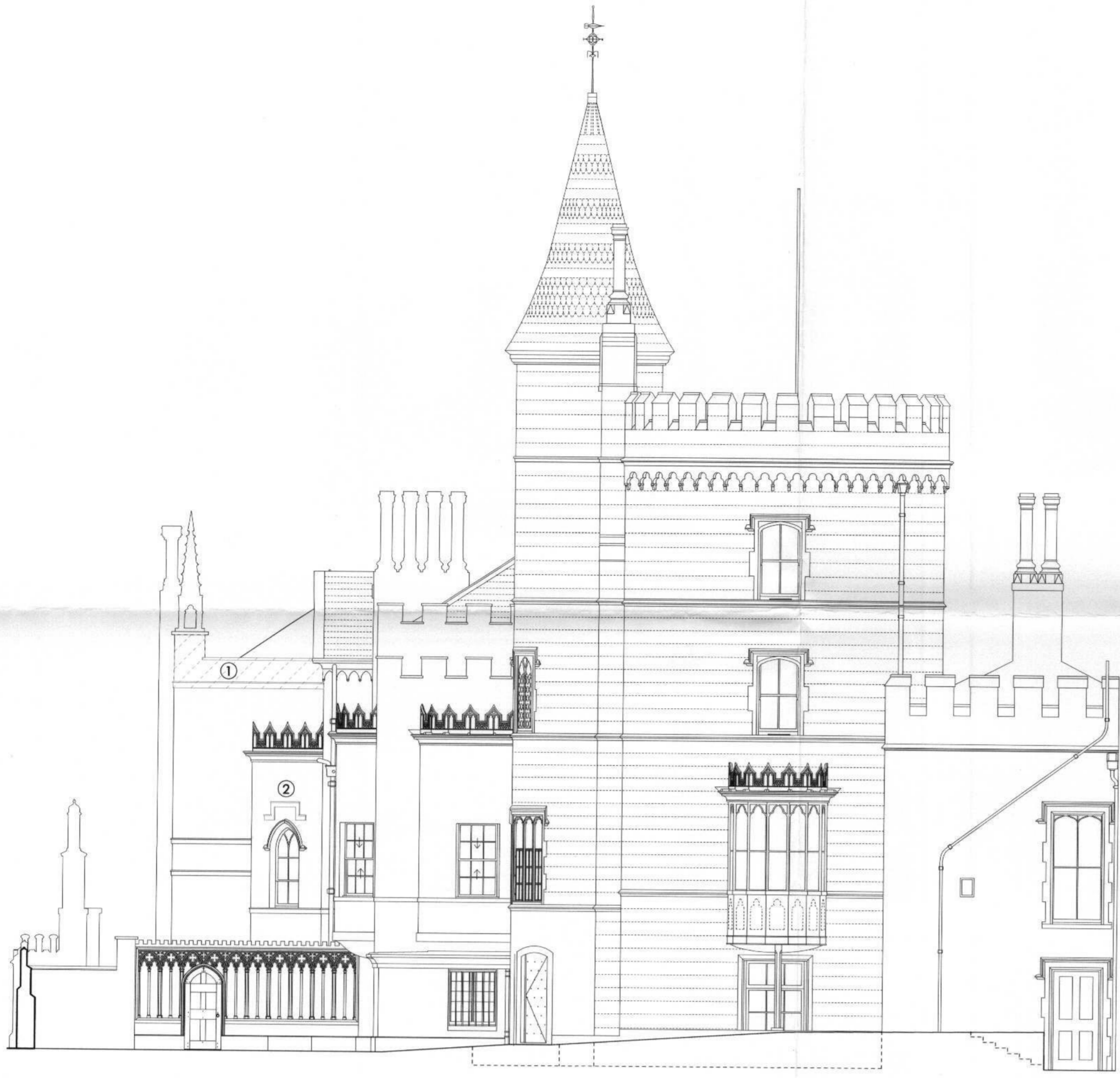


RECEIVED
- 2 APR 2008
PLANNING

09/0782/LBC



- 1) Rebuild parapets to north and west elevations in new brickwork laid in lime mortar with new rough-cast lime stucco to match original, the lime wash to original colour. New Portland stone coping to match original adjacent.
- 2) Restore original plain stucco profiles to hood moulds and string courses based upon new documentary evidence to match south + east elevations. New lead weatherings.

RECONSTRUCTION TO ORIGINAL CONFIGURATION



THE DRAWING IS COPYRIGHT PETER JENKINS ARCHITECTS LTD AND ALL RIGHTS ARE RESERVED FOR PUBLICATION OF THIS PROJECT. UNLESS AUTHORIZED BY THE PRACTICE THE DRAWING MAY NOT BE REPRODUCED, COPIED OR TRANSMITTED IN ANY FORM OR BY ANY MEANS. THE DRAWING MUST BE USED IN CONJUNCTION WITH THE SPECIFICATION.

NO.	DATE	BY	FOR
1	06/11/2006	PJ	01
2	08/04/2008	PJ	02
3			
4			
5			
6			

OFFICE COPY
DO NOT REMOVE FROM FILE

WALPOLE'S VILLA
STRAWBERRY HILL HOUSE
TITLE
WEST ELEVATION AS APPROVED 06/11/2006
+ 08/04/2008 & WITH ALTERATIONS
DWG NO. SCALE 1:100 @ A2
SHEET CA-47 DATE MAY 2008
PETER JENKINS ARCHITECTS LTD
19-25 WATFOLTON STREET LONDON, W11 1PP
WWW.PJAS.CO.UK TEL: 020 7462 2972