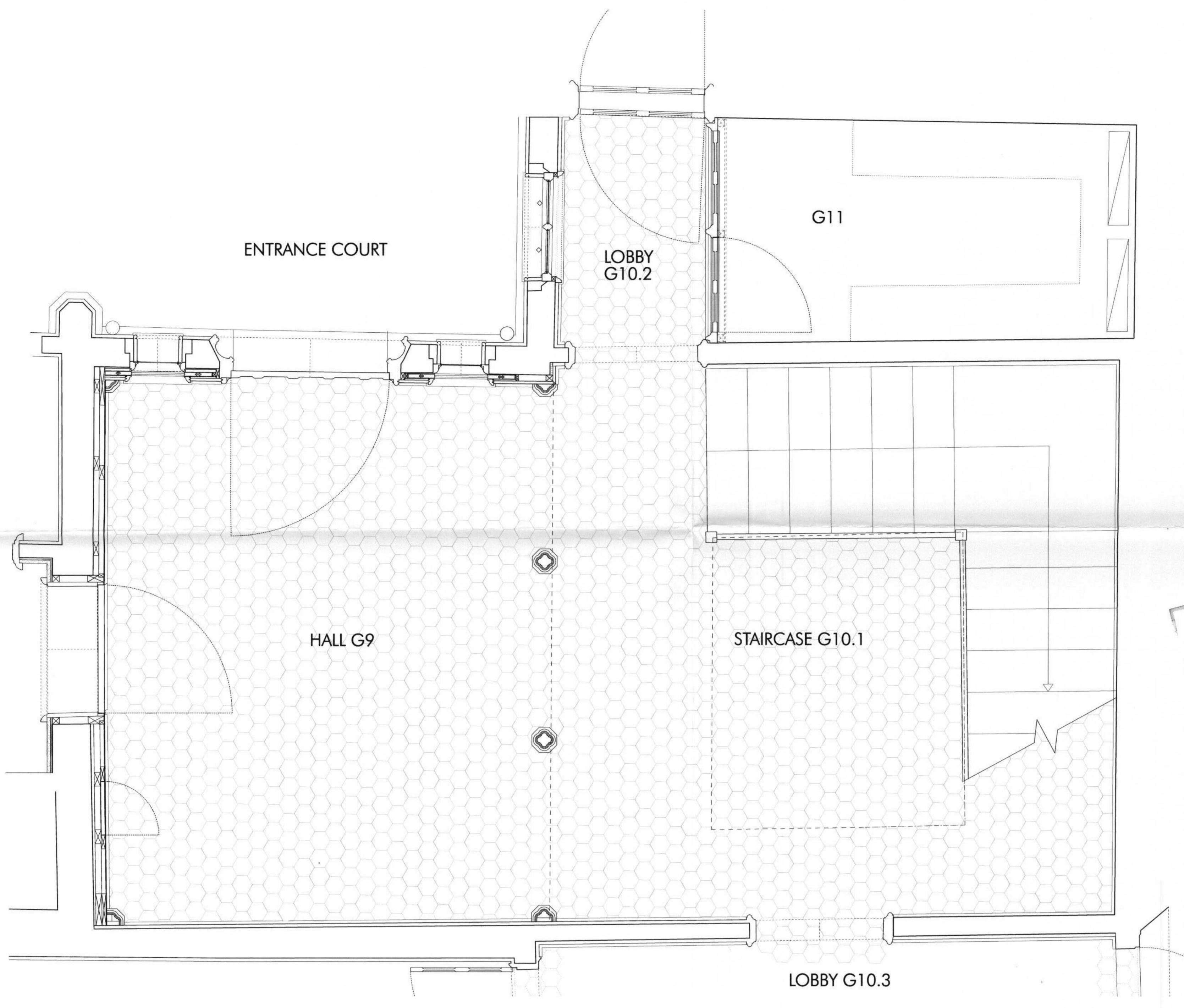
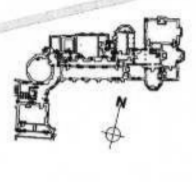


RECEIVED
2 APR. 2009
PLANNING

09/0782/LBC



OFFICE COPY
DO NOT REMOVE FROM FILE

 Heritage
LOTTERY FUNDED

THIS DRAWING IS COPYRIGHT PETER INSKIP & PETER JENKINS ARCHITECTS LTD AND MUST NOT BE USED FOR PURPOSES OTHER THAN IN RELATION TO THE PROJECT UNLESS AUTHORIZED BY THE ARCHITECTS.
THE DRAWING MUST NOT BE COPIED, REPRODUCED OR TRANSMITTED IN ANY FORM OR BY ANY MEANS, ELECTRONIC OR MECHANICAL, INCLUDING PHOTOCOPYING, RECORDING, OR BY ANY INFORMATION STORAGE AND RETRIEVAL SYSTEM.
THE DRAWING MUST BE USED IN CONNECTION WITH THE SPECIFICATION.

0 200 400 600 800 1000 mm

| NO. | DATE | BY | REVISION |
|-----|------|----|----------|
| | | | |

WALPOLE'S VILLA
STRAWBERRY HILL HOUSE
TITLE
G9, G10 PROPOSED LAYOUT OF TILES

DWG NO. SCALE 1:20 @ A2
SHT. NO. DATE JAN 2009

PETER INSKIP & PETER JENKINS ARCHITECTS LTD
19-23 WHITE LION STREET LONDON N1 9PD