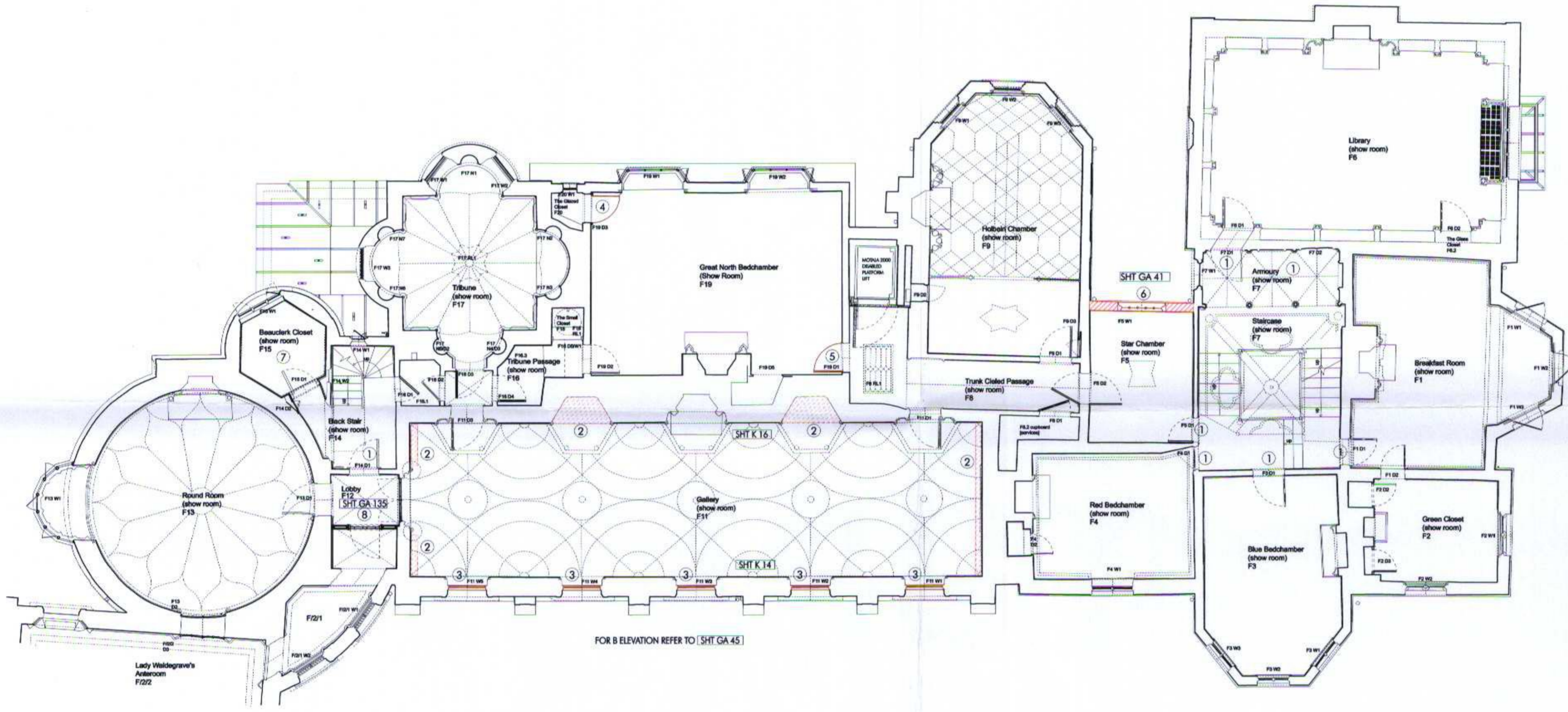


RECEIVED
- 2 APR 2009
PLANNING

09/0782/LBG



- 1 Disincorporate 1860s enrichment (of various materials - composition, softwood and plaster) to door panels F7 D1 F14 D1, F5 D1 to restore Walpole's original details. Disincorporate ceiling enrichments F7 and F12. Set aside dismantled ornament for museum interpretation use on site.
- 2 Lift floor boards against west + east walls and in north niches for new trench connection bases.
- 3 Disincorporate oak windows, reveal lintels, shutters, and sashes for reduction to original size based upon site evidence. Disincorporate sills for reinstatement to original level. Set aside 1950s ironwork (approx 300mm high) for storage and interpretation use. Disincorporate horizontal dado rail and Gothic dado mould for reinstatement to original level. Disincorporate 1860s vertical dado rail to stone.
- 4 F19 D3: Disincorporate introduced door to stone.
- 5 F19 D1: Carefully disincorporate doorset for repair and reinstatement in original location F19 D3 to Great Cloak.
- 6 After recording, disincorporate 1950s north wall for three stories to facilitate reconstruction of windows to their original configuration.

SHT GA 45 REFER TO DRAWING NO*
REINTEGRATION/STORAGE
DISMANTLING



THE DRAWING IS COPYRIGHT PETER INSKIP + PETER JENNINGS ARCHITECTS LTD AND MUST NOT BE REPRODUCED OR TRANSMITTED IN ANY FORM OR BY ANY MEANS WITHOUT THE EXPRESS WRITTEN PERMISSION OF THE ARCHITECTS.
THE DRAWING HAS NOT BEEN CHECKED FOR CONSTRUCTION AND SHOULD NOT BE USED FOR CONSTRUCTION WITHOUT THE ARCHITECTS' CONSENT.

0	1	2	3	4	5	m
1:100	1:100	1:100	1:100	1:100	1:100	1:100
DATE	DATE	DATE	DATE	DATE	DATE	DATE
SCALE	SCALE	SCALE	SCALE	SCALE	SCALE	SCALE

OFFICE COPY
DO NOT REMOVE FROM FILE

**WALPOLE'S VILLA
STRAWBERRY HILL HOUSE**
TITLE
FIRST FLOOR PLAN AS APPROVED 06/1/06
+ 08/24/53 + WITH STRIP OUT
DWG NO SCALE 1:100 @ A2
SHT GA 012 DATE MAY 2006
PETER INSKIP + PETER JENNINGS ARCHITECTS LTD
19-23 WHITE LION STREET LONDON W1 9PD
TEL: 020 7463 4500 FAX: 020 7463 4501