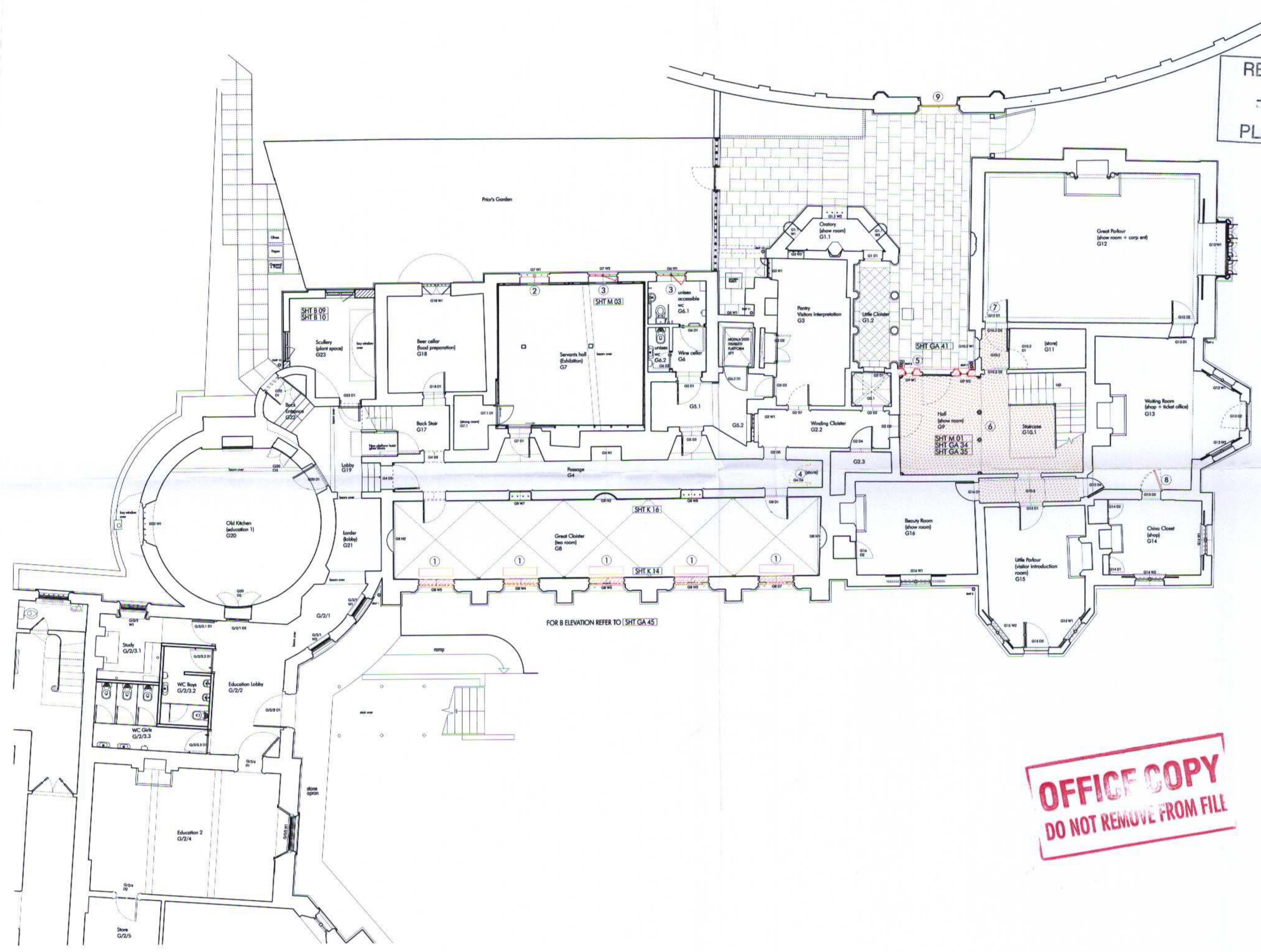


09/0782/LBC

RECEIVED  
- 2 APR 2009  
PLANNING



- 1 Dismantle iron windows to store. Remove metal sashes bases etc. Remove walling below window. On 8 floor grilles and hatch headers.
- 2 G7 W1: dismantle 1760 window frame set incl security bars for repositioning to original config.
- 3 G6 W1 and G7 W2: remove C20 timber corn and sill to frame in order to restore original air of window. Dismantle iron bars for repositioning.
- 4 Dismantle partition and doorset to restate in a location.
- 5 Carefully dismantle 1928 north wall facing Eric (dated 1972) to facilitate restoration to original based upon new documentary evidence. Dismantle windows G9 W1/W2 to store. Temporarily dismantle entrance door G9 D1. Record and carefully fit concrete and glass tile in 1959 for re-laying in G3. Remove 1970s slab. Record and dismantle cast 1860s enrichments & ceiling to Hall. Repair plaster ceiling. Temporary prop of ceiling to facilitate dismantle and re-laying.
- 6 Dismantle 1860s enrichments on doors (of work composition, softwood and plaster). Set aside dismantled ornament for museum. Interim repair to store. First floor: G10.2 D1 and G12 D1.
- 7 Dismantle 20th century door leaf to store to facilitate access and security.
- 8 Dismantle 1959 mild steel gate for re-use to gate.

SHT GA 10 REFER TO DRAWING NC  
SHT GA 11 DISMANTLING  
SHT GA 12 REINTEGRATION/STC

Heritage  
LOTTERY FUNDED

THIS DOCUMENT IS COPYRIGHT © 2008 BY BROWN CALVERT ARCHITECTS. NO PART OF THIS DOCUMENT IS TO BE REPRODUCED OR TRANSMITTED IN ANY FORM OR BY ANY MEANS, ELECTRONIC OR MECHANICAL, INCLUDING PHOTOCOPYING, RECORDING, OR BY ANY INFORMATION STORAGE AND RETRIEVAL SYSTEM, WITHOUT PERMISSION IN WRITING FROM BROWN CALVERT ARCHITECTS.

0 1 2 3 4 5

NO. OF SHEETS	1
TOTAL NO. OF SHEETS	1
DATE	08/04/08
COMPUTER	

**OFFICE COPY**  
**DO NOT REMOVE FROM FILE**

**WALPOLE'S VILLA**  
**STRAWBERRY HILL HC**  
 TITLE  
 GROUND FLOOR PLAN AS APPROVED BY  
 08/04/08 & WITH STRIP CUT  
 DWG NO. SCALE 1:10  
 SHT GA 010 DATE