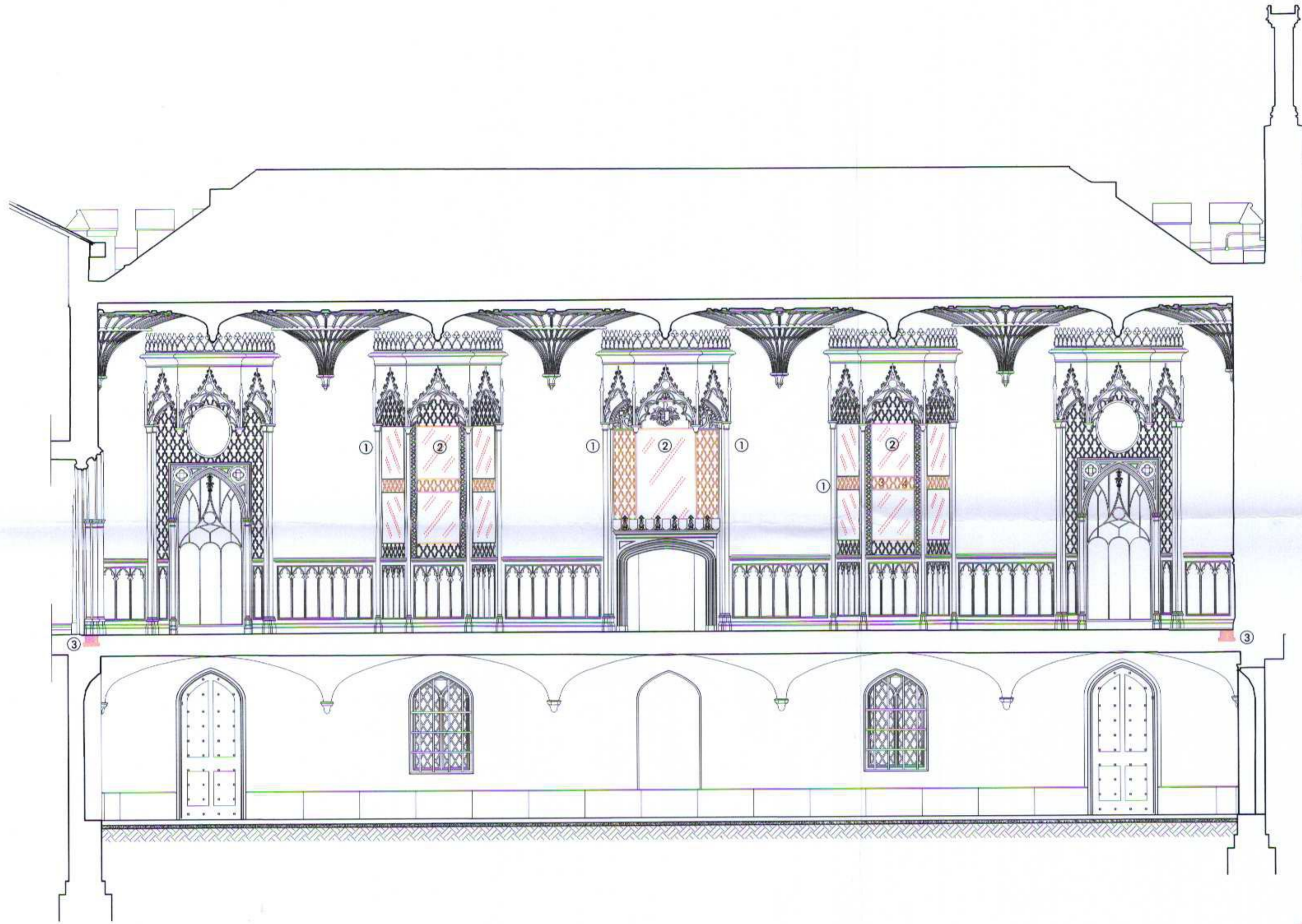
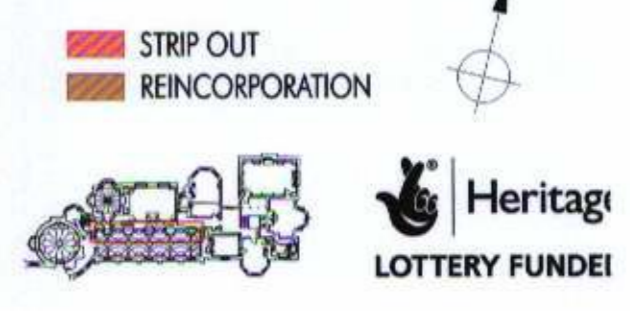


RECEIVED
- 2 APR 2008
PLANNING

09/0782/LBC



- ① Carefully dismantle panels of gilded ashwood tracery for reinstatement in pre-1922 arrangement.
- ② Carefully dismantle 20th century panels of mirror glass.
- ③ Take up oak floor boards against wall + seal walls end in north niches for new trench connector bases.



THIS DRAWING IS COPYRIGHT PETER INSKIP + PETER JENNINGS ARCHITECTS LTD AND
MAY NOT BE USED FOR PURPOSES OTHER THAN IN RELATION TO THIS PROJECT
UNLESS AGREED BY THE PRACTICE
THIS DRAWING MUST NOT BE SCALED - WORK TO DIMENSIONS SHOWN ONLY
THIS DRAWING MUST BE READ IN CONJUNCTION WITH THE SPECIFICATION

0 0.5 1 1.5 2 2.5 m

NO.	DESCRIPTION	DATE
1	ISSUED FOR CONSTRUCTION	15 JUL 2008
2	REVISED	
3	REVISED	

WALPOLE'S VILLA
STRAWBERRY HILL HOUSE
TITLE
DOUBLE GALLERY: SECTION 14 AS EXISTING

DWG NO: SHT K 1.6 SCALE: 1:50 @A2
DATE: JUL 2008
PETER INSKIP + PETER JENNINGS ARCHITECTS LTD
15-22 WHITE LICKER STREET LONDON N1 9PD
TEL: 020 7711 7771 FAX: 020 7711 7772

OFFICE COPY
DO NOT REMOVE FROM FILE