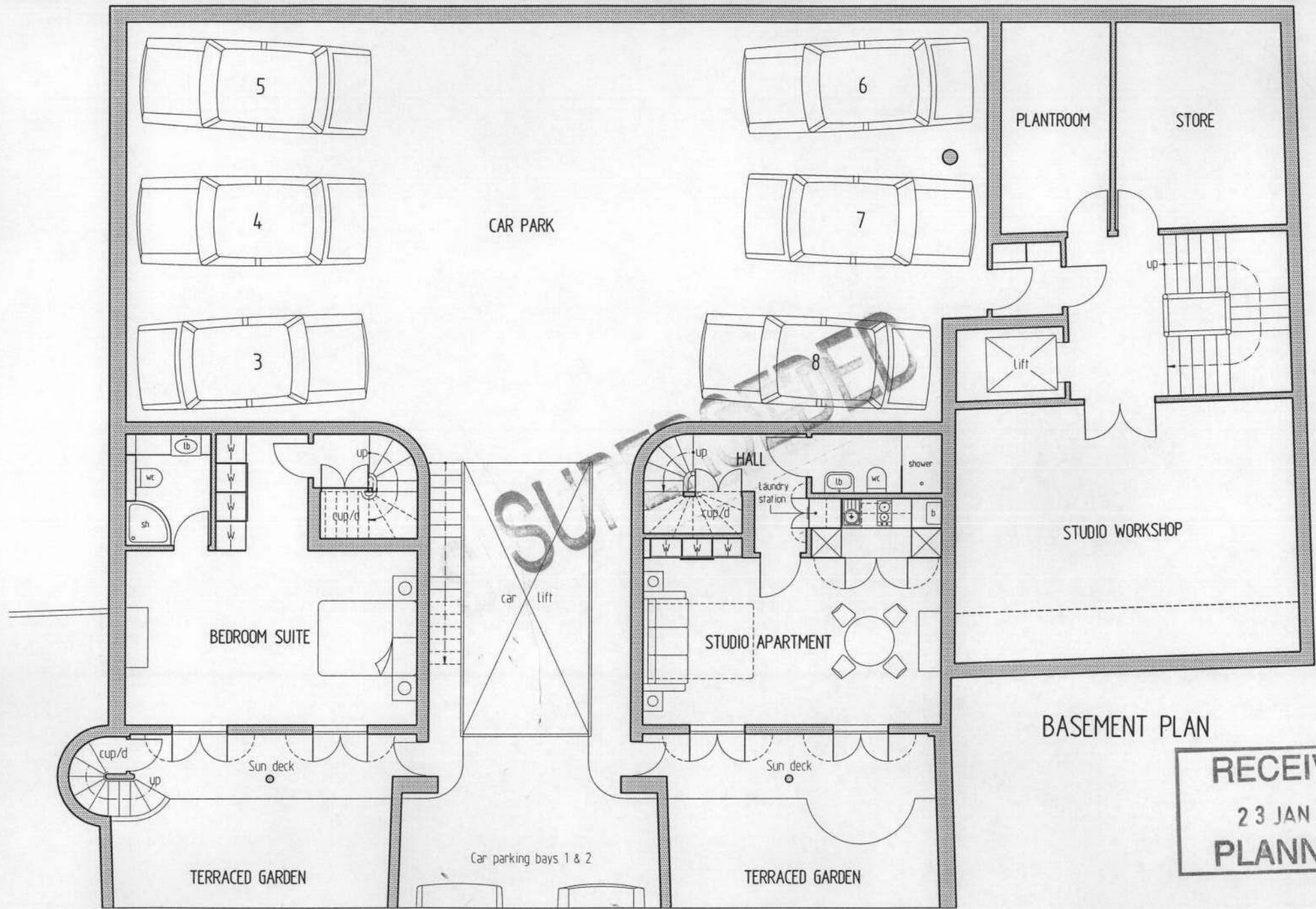


①  
08 / 0225 / FULL



BASEMENT PLAN

RECEIVED  
23 JAN 2008  
PLANNING

stuart mead associates  
The Studios, 3 Upham Park Road, London W4 1PQ  
Telephone No 0208 742 8804 Fax No 0208 742 7060

POUPARTS YARD & 84A HAMPTON ROAD, TWICKENHAM

sma REAR BLOCK scale 1:100 date Dec' 2007 715 TP3s