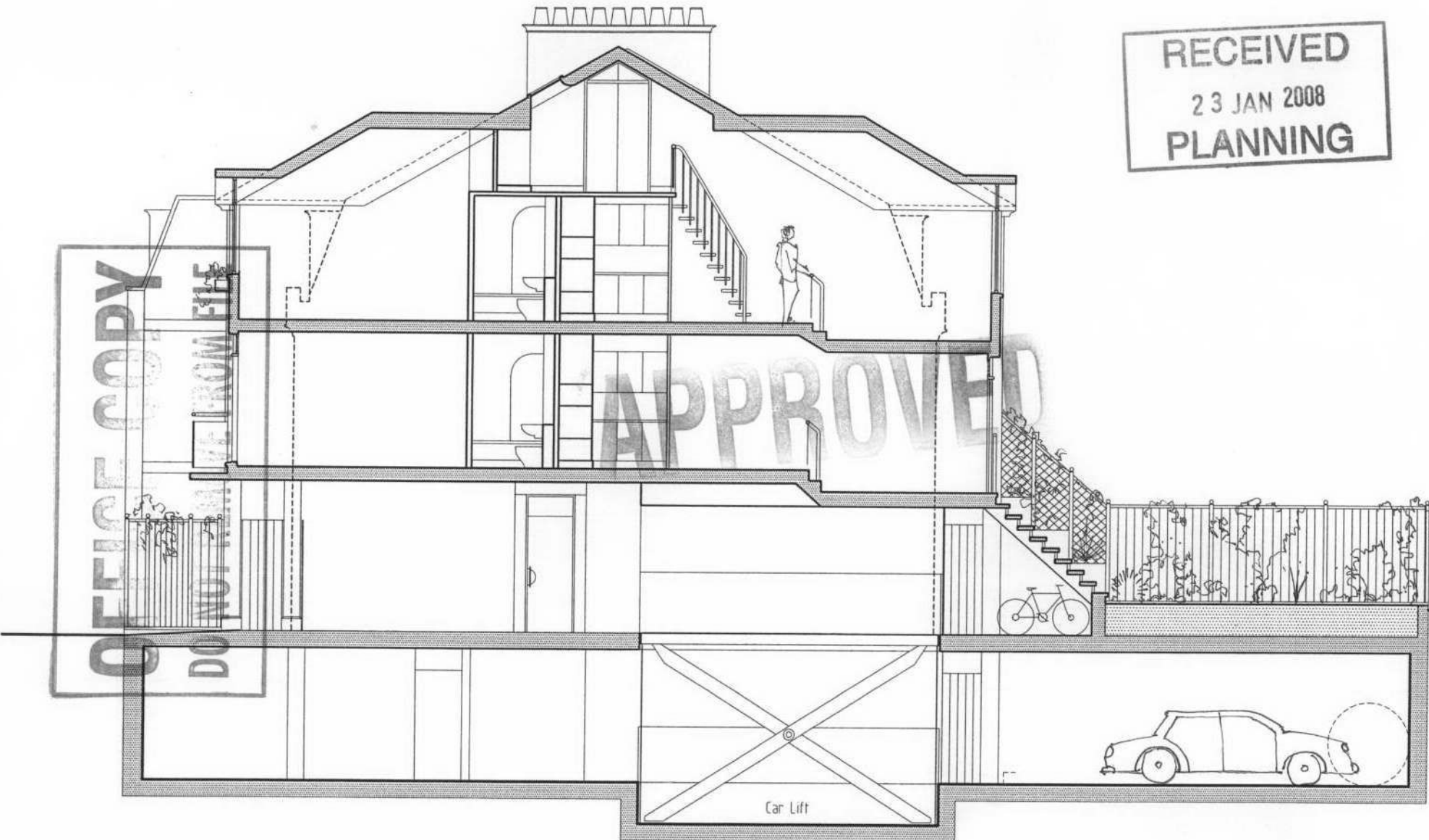


RECEIVED
23 JAN 2008
PLANNING

08/0225/FUL



CROSS SECTION

stuart mead associates
The Studios 3 Upham Park Road London W4 1PQ
Telephone No 0208 742 6804 Fax No 0208 742 7060

POUPARTS YARD & 84A HAMPTON ROAD, TWICKENHAM

sma

REAR BLOCK

scale 1:100 date Dec' 2007

715
TP13s