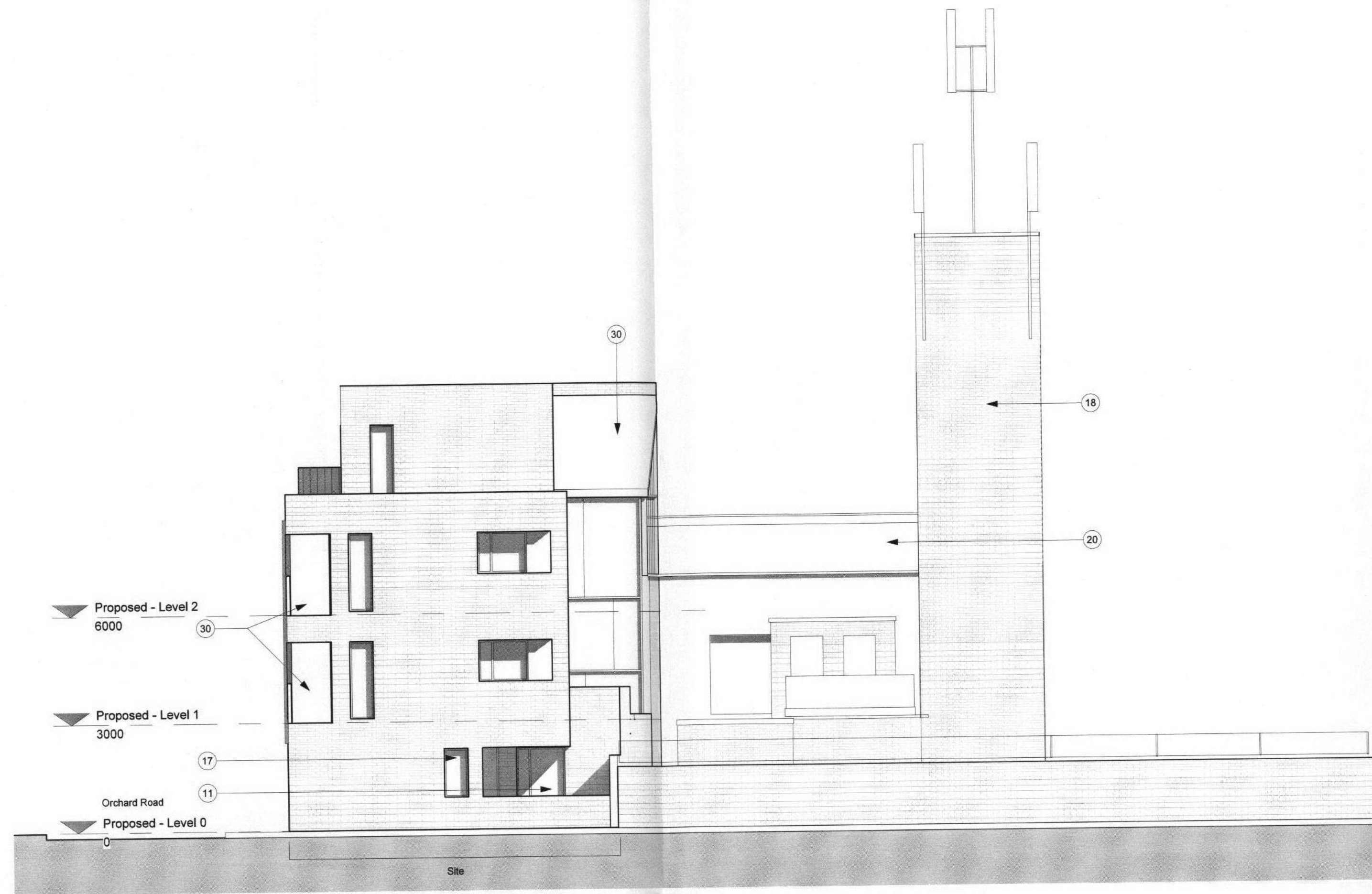


Notes:

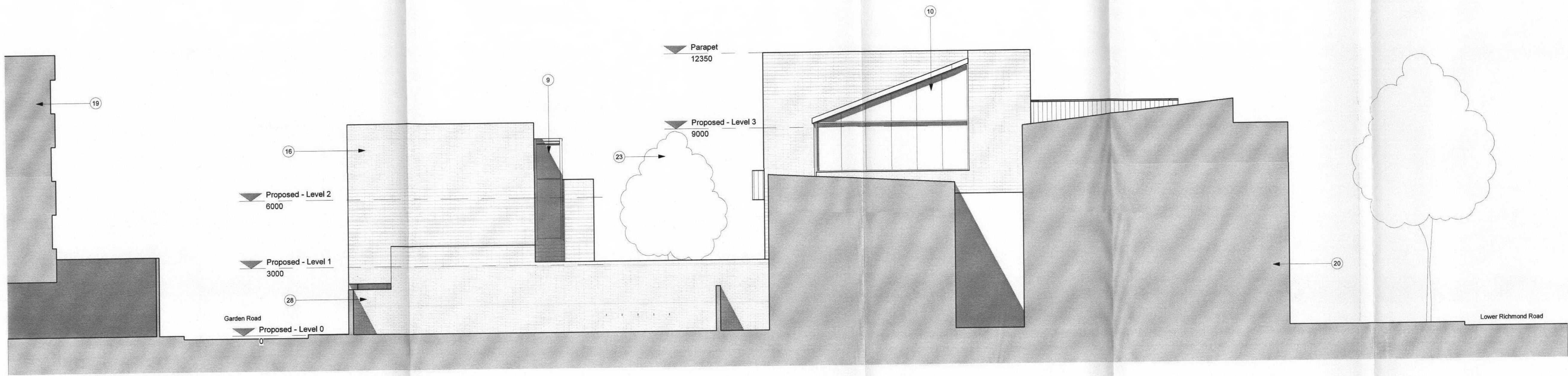
- KEY:**
1. Existing 2 storey Public House and building of townscape merit facade retained and developed
 2. Communal entrance door through existing public house entrance door
 3. New openings punched through existing brick facade
 4. Brick boundary wall with secure access gate to courtyard
 5. Secure refuse and recycling storage
 6. Secure cycle storage
 7. Courtyard and communal amenity space
 8. Proposed new planting
 9. Stair core A
 10. Stair core B
 11. Private amenity space
 12. Balconies
 13. Roof
 14. Photovoltaic panels
 15. Vertical rainproof dark grey cladding
 16. London stock brick
 17. Glazed windows with operable acoustic panel
 18. Existing firemans tower
 19. 4-5 storey office block - approximate height
 20. 2-3 storey housing - approximate height
 21. 3 storey plus pitched roof offices - approximate height
 22. Pedestrian footbridge
 23. Proposed location of tree
 24. PV Panels
 25. Existing opening infilled
 26. Entrance door to stair core
 27. Glazing to stair core
 28. Wall to match height of adjacent wall
 29. Glazed Roof



1 Proposed Elevation - Garden Road
GA(00)101 1:100

RECEIVED
12 JAN 2010
PLANNING

10/0076/PL



2 Proposed Elevation - Flank wall to Fire Station
GA(00)101 1:100

P5	09.11.16	Sustainability and Daylight consultants advice incorporated	KO
P4	09.10.16	Wall to stairwell raised	KO
P3	09.10.01	Scheme revised following withdrawal of previous application	KO
P2	09.03.24	Daylight consultants advice included	KO
P1	09.03.02	Window positions amended	KO
Rev	Date	Note	CHKD

Drawing Status:
PLANNING

Drawing Title:
PROPOSED ELEVATIONS

Drawing Reference:

0837 GA(00)101	P5
Project No.	Drawing Number
Scale: 1:100	Drawn By: KO
Checked By: MLT	01/29/09

Project Title:
SHAKESPEARE TERRACE

Client:
YOUNGS BREWERY PLC

This drawing is intended for the purpose indicated in the status box only. Do not scale from this drawing. All dimensions shown should be checked on site and discrepancies verified with the architect. This drawing must be read in conjunction with the relevant details and specifications shown.

