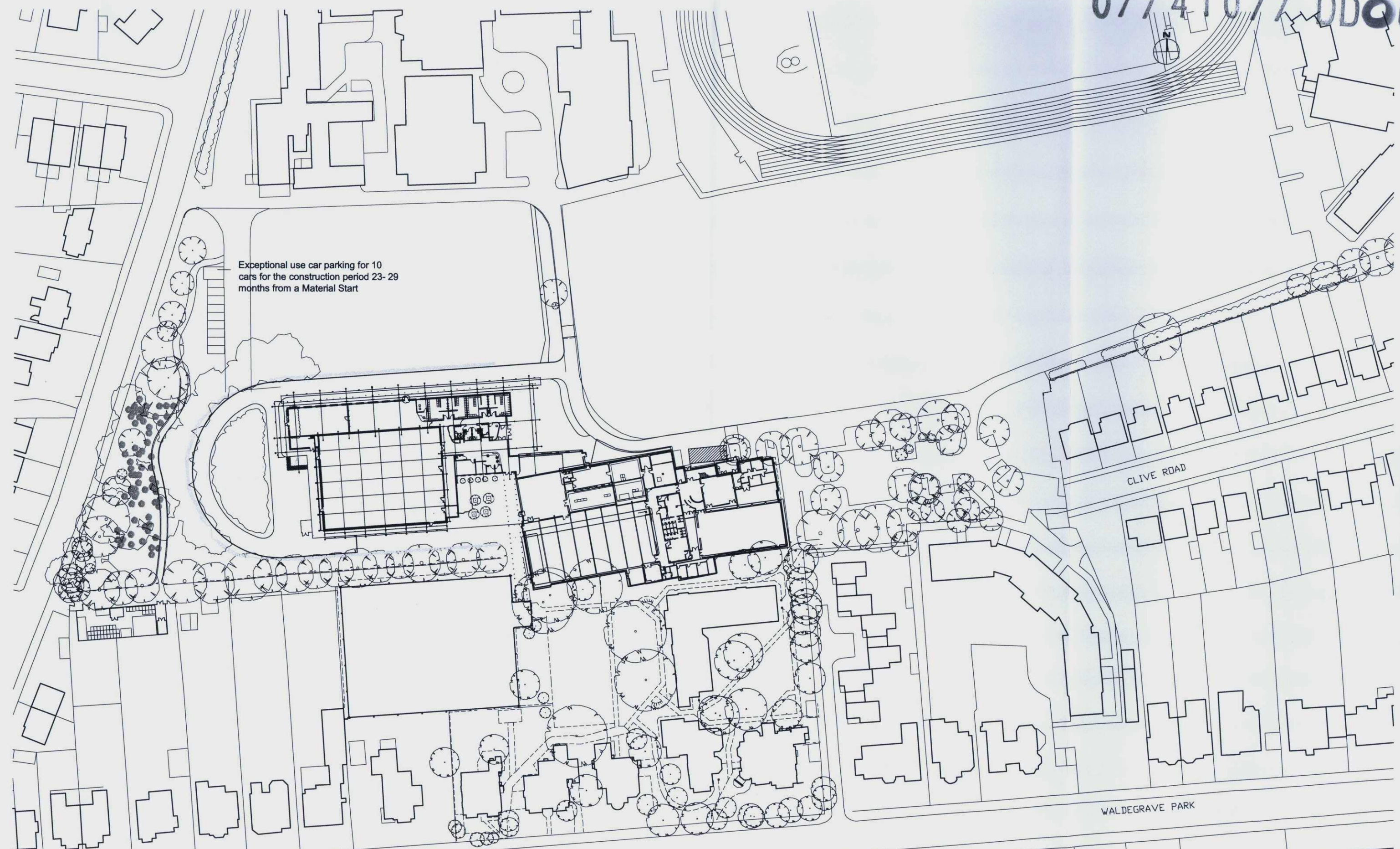


07/4107/DDOI

Exceptional use car parking for 10 cars for the construction period 23- 29 months from a Material Start



NOTES

- 1. cad info : file: ...DrawingsRSS\planning\12.54 layout name: P.12.54 plot style: RSS standard
- 2. This drawing is not to be scaled. Use figured dimensions only. Detailed site survey to be carried out to establish tolerances. Figured dimensions are in mm. All dimensions shall be verified on site before proceeding with the work. The architect shall be notified of any discrepancies.
- 3. All works take place within the red line, however PEDESTRAIN AND PRIVATE VEHICLES TO BE ALLOWED ACCESS THROUGH THE SITE. THE RUGBY PITCH IS TO REMAIN IN PERFECT CONDITION THROUGHOUT THE WORKS.

REVISIONS

rev	date	description
-	11.11.08	Issued for Planning
A	09.12.08	Timescales revised to show dates instead of number of months
B	21.12.09	Issued for Planning Conditions

10 Car Parking Spaces
23- 29 months from a Material Start
New Build complete, Refurbishment on site

RIVINGTON STREET STUDIO ARCHITECTURE

54 RIVINGTON STREET LONDON EC2 A3QN T: 020 7739 8945 F: 020 7729 4098 E: rss@rssa.co.uk www.rivingtonstreetstudio.co.uk

job title St Mary's University College - New Sporting Facilities

drawing title Construction phasing- 23- 29 months from a Material Start

drawn by CF
date may 09

job no RSS 449
scale 1:1000 @ A3

drawing no P.12.54
revision B

