

NOT FOR CONSTRUCTION

NOTES

- THIS DRAWING IS TO BE READ IN CONJUNCTION WITH ALL ENGINEERS & ARCHITECT'S DRAWINGS. FIGURED DIMENSIONS ONLY (NOT SCALING) TO BE USED. WHERE A CONFLICT OF INFORMATION EXISTS OR IF IN ANY DOUBT - ASK.
- CONSULTANTS TO BE INFORMED IMMEDIATELY OF ANY DISCREPANCIES BEFORE WORK PROCEEDS.

LEGEND

NEW ROOF RAIN WATER MANHOLE	
NEW ROOF RAIN WATER PIPE	
EX. FOUL MANHOLE	
EX. FOUL PIPE	
NEW FOUL MANHOLE	
NEW FOUL PIPE	
EX. SURFACE WATER MANHOLE	
EX. SURFACE WATER PIPE	
NEW SURFACE WATER MANHOLE	
NEW SURFACE WATER PIPE	
EX. COMBINED MANHOLE	
EX. COMBINED PIPE	
NEW COMBINED MANHOLE	
NEW COMBINED PIPE	
NEW RISING MAIN	
FOUL ACCESS JUNCTION	
SURFACE ACCESS JUNCTION	
RAINWATER PIPE	
SOIL VENT PIPE	
ROAD GULLEY	
BACK INLET GULLEY TRAP	
FOUL RODDING EYE	
SURFACE RODDING EYE	
GULLEY TRAP	
Ex. WATERMAIN	

SURFACE WATER MANHOLE SCHEDULE

REF.	CL	IL	REMARKS
S3.0	35.15	34.85	NEW MANHOLE
S3.1	35.15	34.78	NEW MANHOLE
S3.2	35.15	34.72	NEW MANHOLE

FOUL WATER MANHOLE SCHEDULE

REF.	CL	IL	REMARKS
F2.0	35.25	34.85	NEW MANHOLE
F2.1	35.25	34.56	NEW MANHOLE
F2.2	35.25	34.41	NEW PUMP SUMP MANHOLE

ISSUE	DATE	DESCRIPTION	BY	CR	RS
PL1	29.04.10	ISSUED FOR PLANNING			

ISSUE STATUS: PRELIMINARY (P1, P2, P3 etc.) PLANNING (PL1, PL2, PL3 etc.) TENDER (T1, T2, T3 etc.) CONSTRUCTION (C1, 1, 2 etc.)

Barratt Meehan Consulting Engineers, Civil - Structural - Project Management.
 E-mail: barrett@barrattmeehan.co.uk Web: www.barrattmeehan.co.uk
 London Office: 10 Gray Court Place, Westminster, London SW1P 1QR, United Kingdom. Tel: (0204) 257 000 0000 Fax: (0204) 257 000 0100
 Dublin Office: Barratt House, 25-26 Lower Bachelors Street, Dublin 2, Ireland. Tel: (01) 677 2000 Fax: (01) 677 0104
 Atlanta Office: Suite 108, Irish Carrig Business Centre, Goldensland, Atlanta, Ga. Westmeath, Ireland. Tel: (00353) 044 00001 Fax: (00353) 044 00002

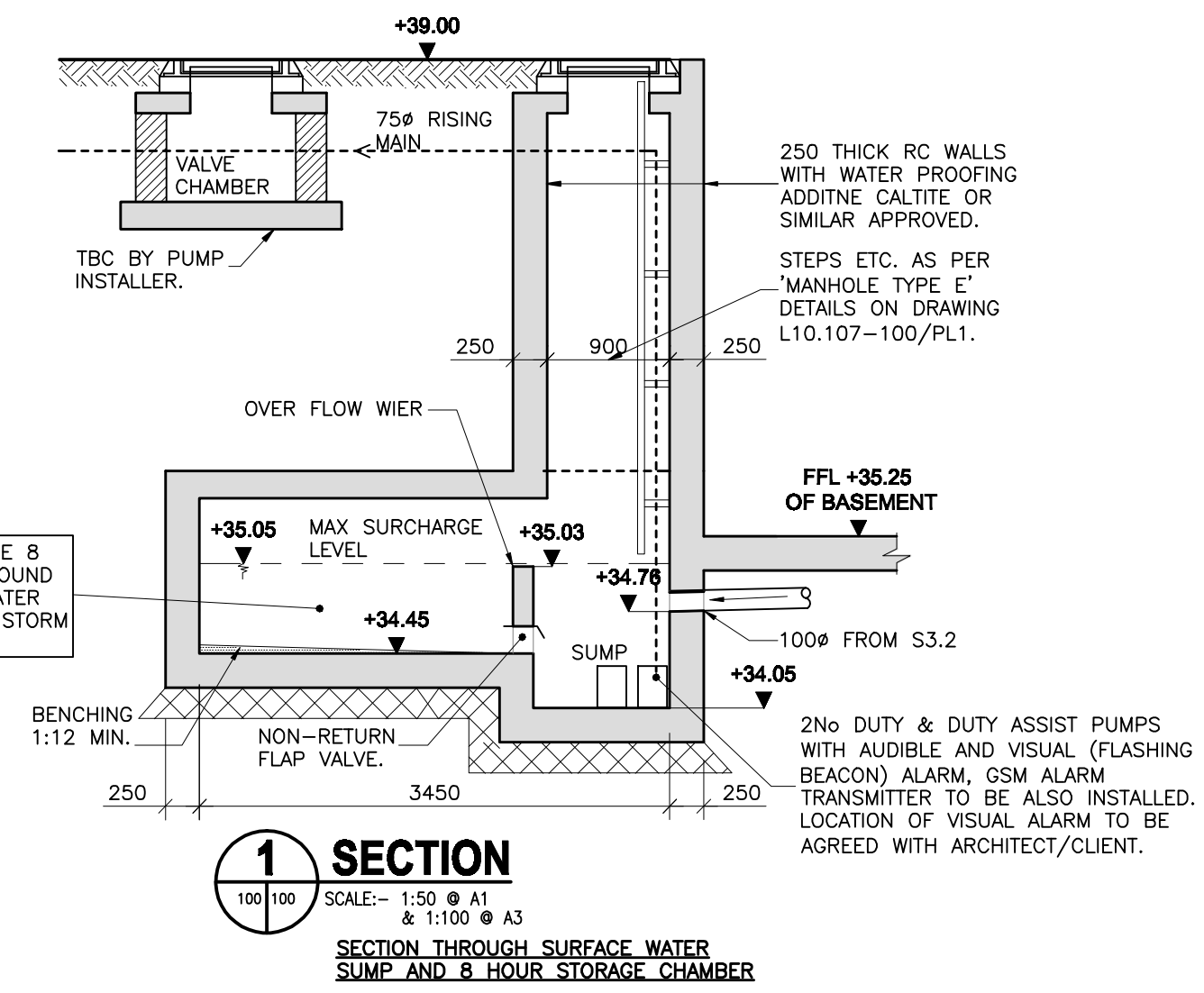


CLIENT
FOM PROPERTIES LTD

PROJECT TITLE
QUEENS ROAD, RICHMOND, SURREY

DRAWING TITLE
LOWER GROUND FLOOR DRAINAGE LAYOUT

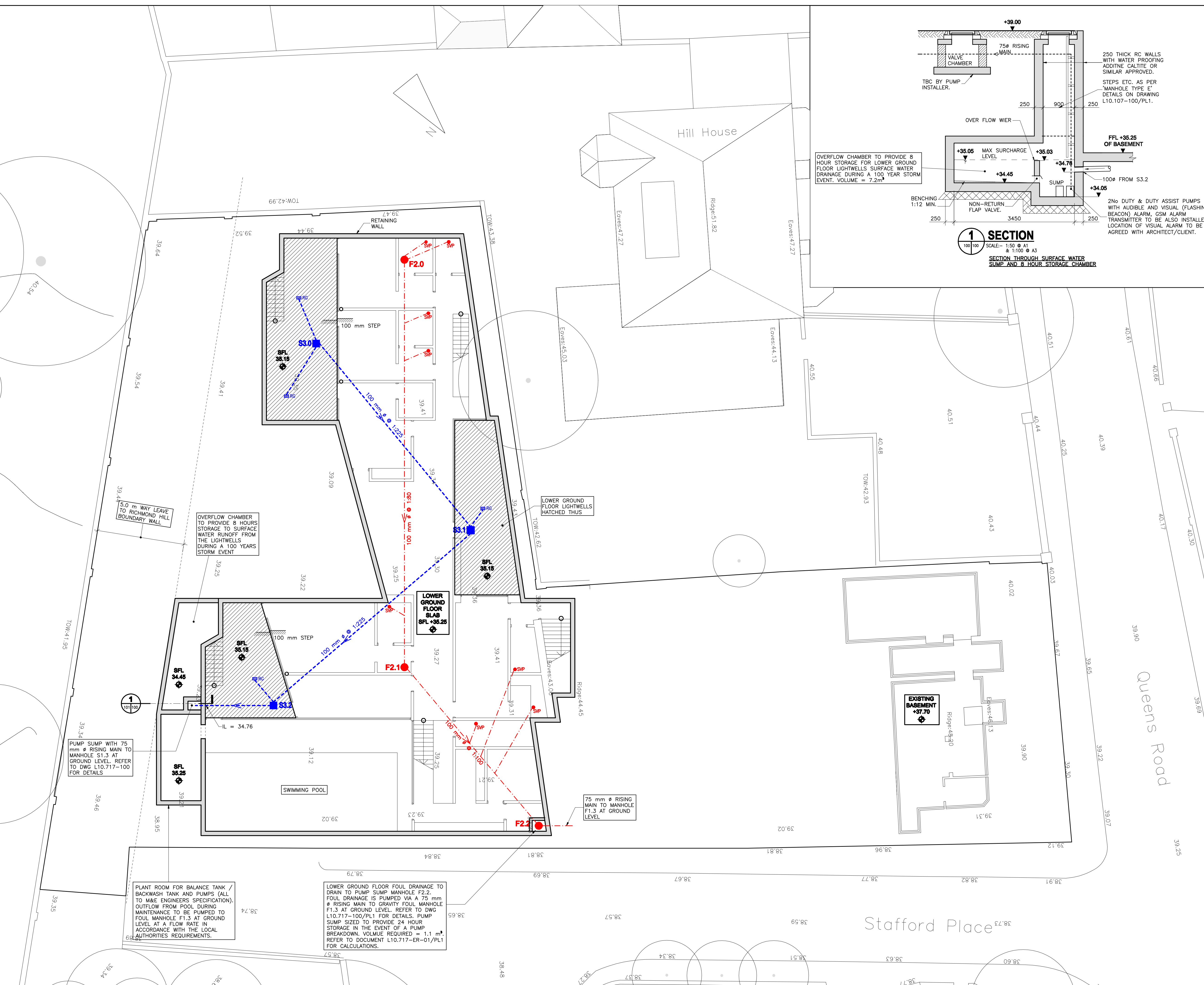
SCALE @ A1	JOB NO.	DRAWING NO.	ISSUE
1:100	L10.717	101	PL1



OVERFLOW CHAMBER TO PROVIDE 8 HOUR STORAGE FOR LOWER GROUND FLOOR LIGHTWELLS SURFACE WATER DRAINAGE DURING A 100 YEAR STORM EVENT. VOLUME = 7.2m³

1 SECTION

SCALE: 1:50 @ A1 & 1:100 @ A3
SECTION THROUGH SURFACE WATER SUMP AND 8 HOUR STORAGE CHAMBER



OVERFLOW CHAMBER TO PROVIDE 8 HOURS STORAGE TO SURFACE WATER RUNOFF FROM THE LIGHTWELLS DURING A 100 YEARS STORM EVENT

LOWER GROUND FLOOR LIGHTWELLS HATCHED THUS

LOWER GROUND FLOOR SLAB SFL +35.25

EXISTING BASEMENT +37.70

75 mm Ø RISING MAIN TO MANHOLE F1.3 AT GROUND LEVEL

PLANT ROOM FOR BALANCE TANK / BACKWASH TANK AND PUMPS (ALL TO M&E ENGINEERS SPECIFICATION). OUTFLOW FROM POOL DURING MAINTENANCE TO BE PUMPED TO FOUL MANHOLE F1.3 AT GROUND LEVEL AT A FLOW RATE IN ACCORDANCE WITH THE LOCAL AUTHORITIES REQUIREMENTS.

LOWER GROUND FLOOR FOUL DRAINAGE TO DRAIN TO PUMP SUMP MANHOLE F2.2. FOUL DRAINAGE IS PUMPED VIA A 75 mm Ø RISING MAIN TO GRAVITY FOUL MANHOLE F1.3 AT GROUND LEVEL. REFER TO DWG L10.717-100/PL1 FOR DETAILS. PUMP SUMP SIZED TO PROVIDE 24 HOUR STORAGE IN THE EVENT OF A PUMP BREAKDOWN. VOLUME REQUIRED = 1.1 m³. REFER TO DOCUMENT L10.717-ER-10/PL1 FOR CALCULATIONS.

PUMP SUMP WITH 75 mm Ø RISING MAIN TO MANHOLE S1.3 AT GROUND LEVEL. REFER TO DWG L10.717-100 FOR DETAILS

Stafford Place

Queens Road