

RECEIVED
25 JUN 2010
PLANNING

10 / 1823 / FULL

St Mary's University College
Track Recorders Hut

Design and Access Statement
June 2010

rivingtonstreetstudio

23 Curtain Road London EC2A 3LT
Tel 020 7739 8945 www.rivingtonstreetstudio.co.uk

RSS532 St. Mary's University College, Track Recorders Hut

Introduction

St. Mary's University College is a Higher Education College offering under and post graduate degrees. It has approximately 3,000 students and 390 staff. The main campus is located off Waldegrave Road in Strawberry Hill, Twickenham.

The project brief is for a temporary building to be situated adjacent to the existing athletics track at the rear of the existing Library building. The building will provide a Track Recorders Hut to be used by both SMRAC - Sports St. Mary's athletics club and local community athletic clubs. The proposed position will not be visible from the public highway, nor will it be visible by neighbouring properties.

The Track Recorders Hut will be accessed from the public highway via Waldegrave Road to an existing private campus road which leads to the existing athletics track and Cafe facilities. The new scheme will provide a small hut, with an area of approximately 46m², for athletics officials to record the results from athletic meetings.

The existing external emergency escape routes around the existing buildings remain unaffected by the project. All fire procedures after evacuating the building will be as per St. Mary's University College standard procedures.



Aerial site photograph showing St. Mary's University College Strawberry Hill Campus

RSS532 St. Mary's University College, Track Recorders Hut



Proposed site with Library and Chapel Buildings in the background



Proposed site with Library and Chapel Buildings in the background



Proposed site with existing tree line in the background



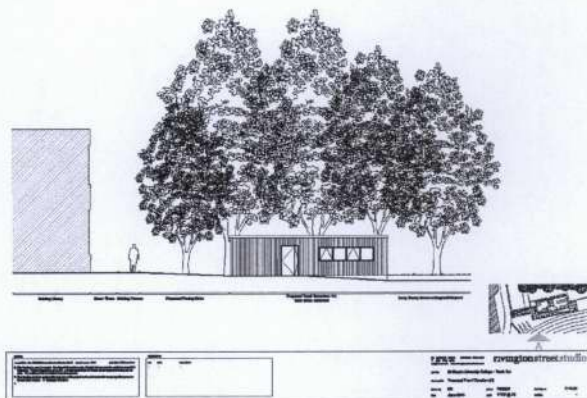
Proposed site with existing tree line and existing athletics track in the background

RSS532 St. Mary's University College, Track Recorders Hut

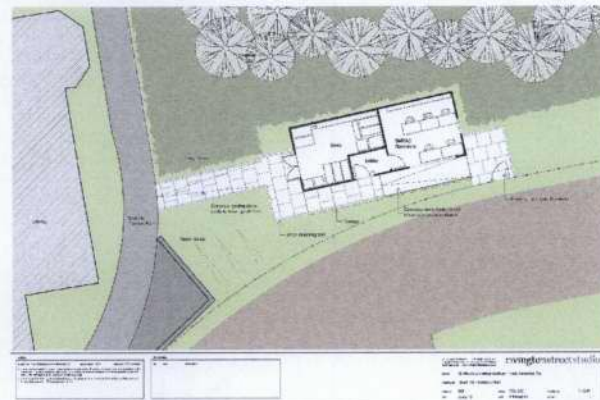
Design statement

The Track Recorders Hut has been designed to be easily identified and accessed whilst not looking inappropriate with its surrounds. Set against a backdrop of existing trees on the North Eastern edge of the existing athletics track and to the rear of the Chapel and Library building, the Hut will be clad with vertical strips of timber. The roof canopy will extend above the paved level landing and provide shelter from the weather at point of entry or exit from the hut. Glazing to the hut is to be kept to a minimum and will be limited to the front elevation and one side elevation facing the track providing the recorders a view of any competitions on the track.

The Hut is situated on a slightly sloping site and will be accessed from an existing pedestrian path via a ramp leading onto a level paved area immediately in front of the main entrance doors. This will provide a level threshold into the building. There will be a need for a further ramp to reach the athletics track. There has not been a levels survey undertaken at present, but it is foreseen that no ramp will have a greater incline than those stated in Approved Document Part M.



Proposed front elevation



Proposed plan in context of site

RSS532 St. Mary's University College, Track Recorders Hut

Access statement

The proposed works will provide full access for those with disabilities: those with mobility problems, the hard of hearing and the visually impaired. Such provision will avoid stigmatisation and will meet the requirements of the Disability Discrimination Act and the new Approved Document Part M.

External doors

The main entrance door will be have a leaf and a half and a minimum clear opening of 800mm when the main leaf is opened. The external storeroom doors will have double leaves and again, a minimum clear opening of 800mm when a single leaf is opened and 1600mm when both leaves are opened. There will be min 300mm clear space to the sides of the leading edge on the pull side. Stainless steel finish ironmongery will visually contrast with all the doors.

Internal doors

The internal door opening will provide adequate space for 926mm wide door leaf with vision panels and have a min 300mm clear space to the side of the leading edge on the pull side. Stainless steel finish ironmongery will visually contrast with the door itself.

Vision panel glazing to internal door leafs

The glazing to internal door leaf vision panels will conform to Approved Document Part N for glazing within the Critical Areas.

Internal circulation

The Track Recorders Hut has very little internal circulation space. There are only two areas within the proposed scheme; the SMRAC Recorders room, which is accessed directly from the entrance lobby; and the Store area, which is accessed directly from the outside via external double doors.

Switch and socket heights

All power outlets will be located at an accessible height on between 400mm min and 1000mm max above finished floor level. Light switches will be located 900mm min and 1100mm max above finished floor level. All sockets and switches will conform to Approved Document Part M.

Sanitary accommodation

There is no sanitary accommodation proposed for this project. There are numerous existing WC and accessible WC facilities in adjacent buildings if required.