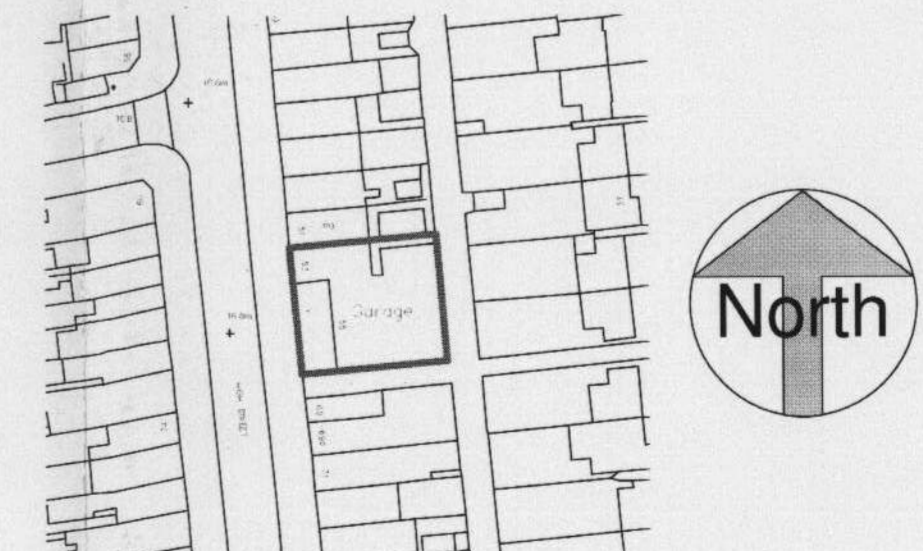
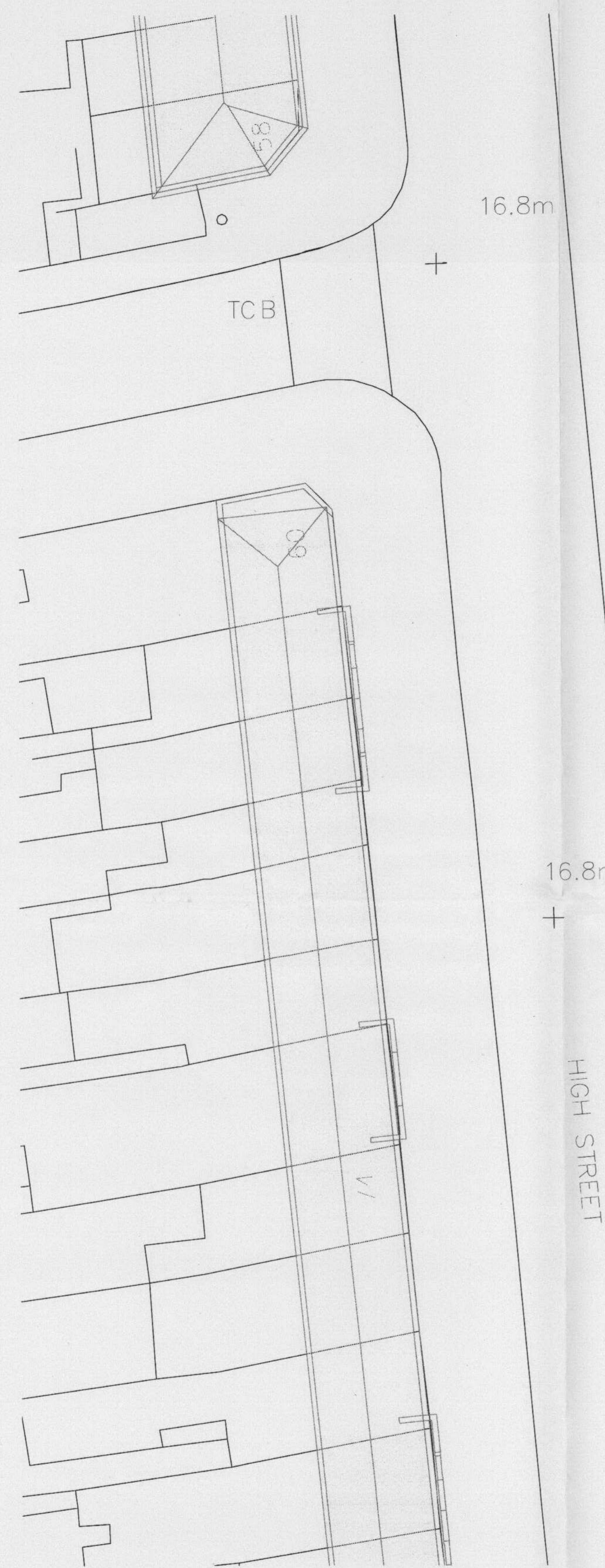


WINDSOR BOROUGH OF  
WINDSOR UPON THAMES  
20 OCT 2010  
PLANNING

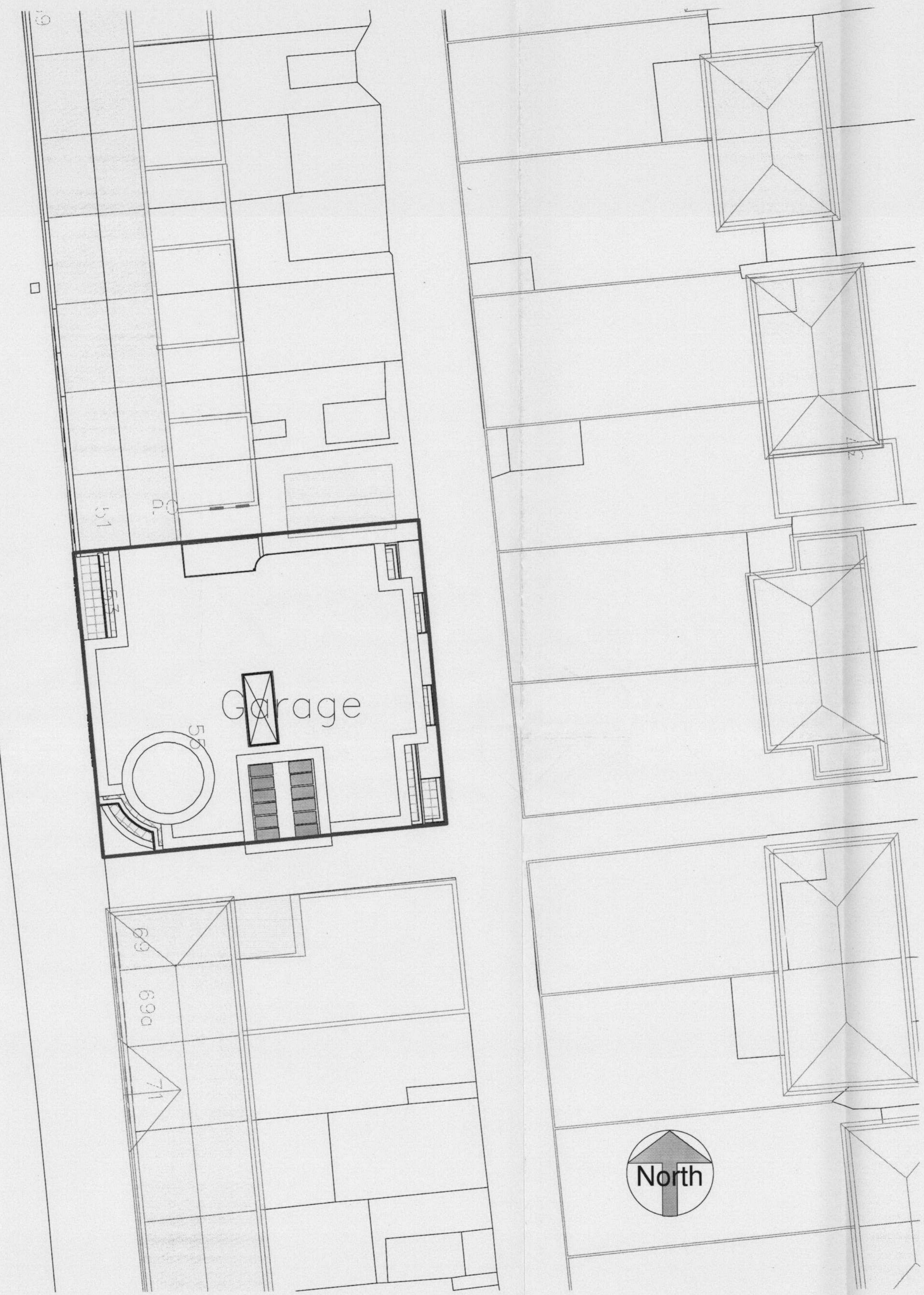
2 Locality Plan  
1:1000



3 Site Location Plan  
1:1250



1 Location Plan  
1:200



*Client*  
**Renaissance Design and Build**

Written dimensions on these drawings shall take precedence over scaled dimensions. Contractors shall verify and be responsible for all dimensions and conditions on the project and this office must be notified of any variations from the dimensions and conditions shown by these drawings prior to commencement of any work. All contractors are deemed to have made themselves aware of site conditions prior to entering into any contract. This drawing is the property of Omni Architectural Services. Copyright is reserved by them and the drawing is issued on condition that it is not copied, reproduced, retained or disclosed to any unauthorised person, either wholly or in part without the consent in writing of Omni Architectural Services.

Rev	Description	Date	Project Name
			<b>Whitton High Street</b>

Drawing Title		Scale @	A1	As indicated
<b>Location Plan</b>				
<b>Planning</b>				
Project Number	Date Drawn	Drawing Number		Revision
<b>1002</b>	<b>Jul '10</b>	<b>PL_001</b>		

Drawn by	OA
Checked by	EPT