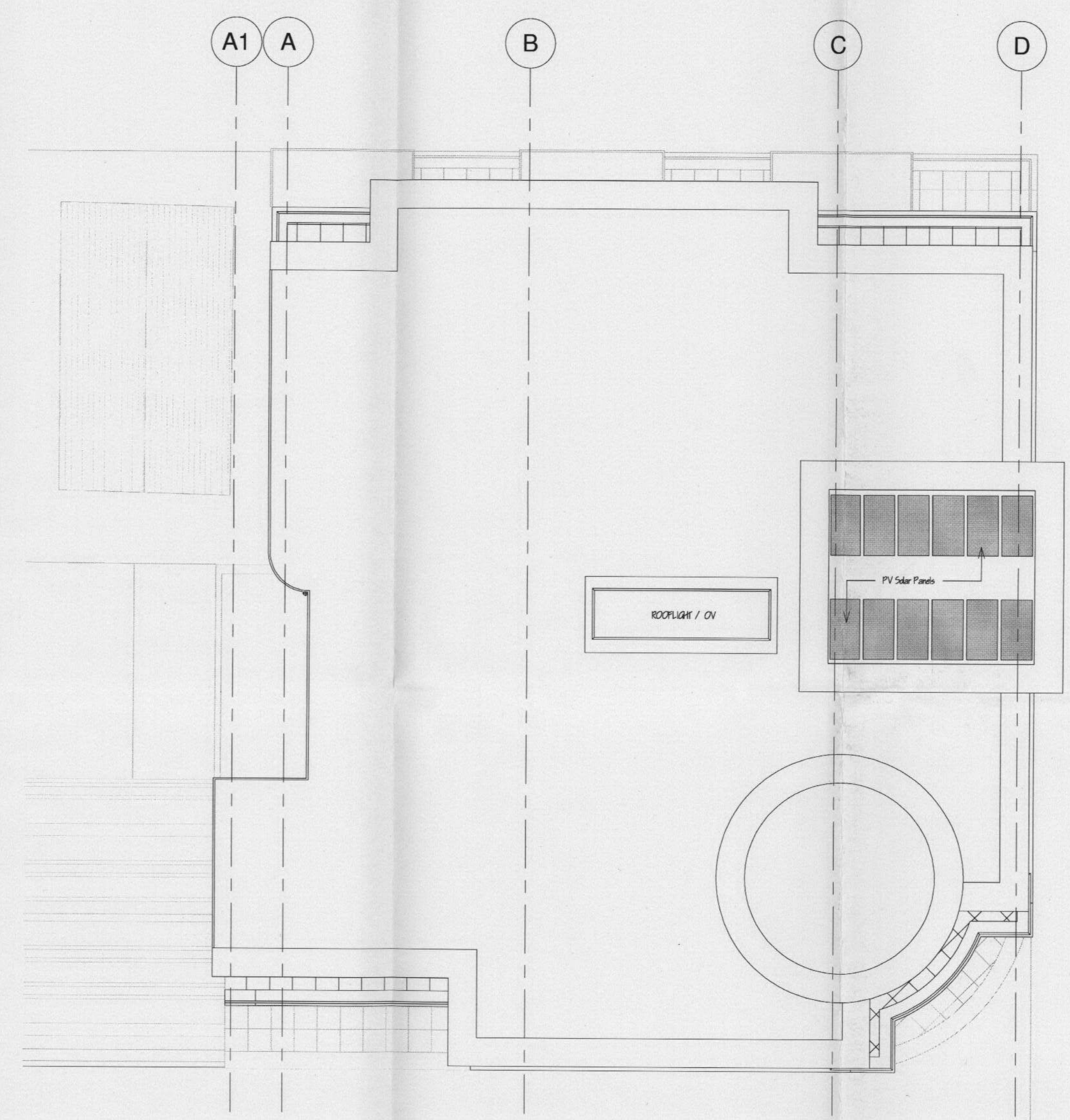
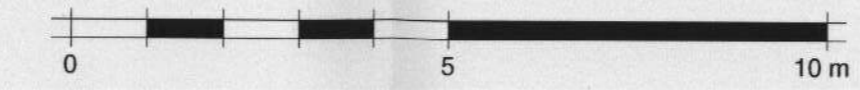


1 02 Second Floor  
1 : 100

Area Type

- 1B2P
- 2B4P
- BALCONY
- LIGHTWELL
- STARWELL



2 04 Roof Plan  
1 : 100

LONDON BOROUGH OF RICHMOND UPON THAMES  
25 OCT 2010  
PLANNING



Client  
**Renaissance Design and Build**

Written dimensions on these drawings shall take precedence over scaled dimensions. Contractors shall verify and be responsible for all dimensions and conditions on the project and this office must be notified of any variations from the dimensions and conditions shown by these drawings prior to commencement of any work. All contractors are deemed to have made themselves aware of site conditions prior to entering into any contract. This drawing is the property of Omni Architectural Services. Copyright is reserved by them and the drawing is issued on condition that it is not copied, reproduced, retained or disclosed to any unauthorised person, either wholly or in part without the consent in writing of Omni Architectural Services.

Rev	Description	Date

Project Name  
**Whitton High Street**

Drawing Title  
**Second and Roof Plan**

Planning

Project Number  
**1002**

Date Drawn  
**Jul '10**

Scale @	<b>A1</b>	<b>1 : 100</b>
Drawn by	<b>OA</b>	
Checked by	<b>EPT</b>	
Drawing Number	<b>PL_003</b>	Revision