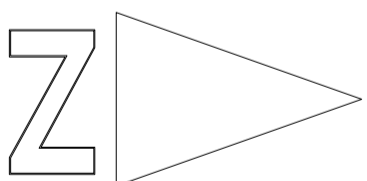


Railway Inn, Hampton

Do not scale from this print. Use figured dimensions only. Contractors are responsible for taking and checking site dimensions.
Design copyright is vested in the Company below from whom consent must be obtained for copying or reproducing this drawing.

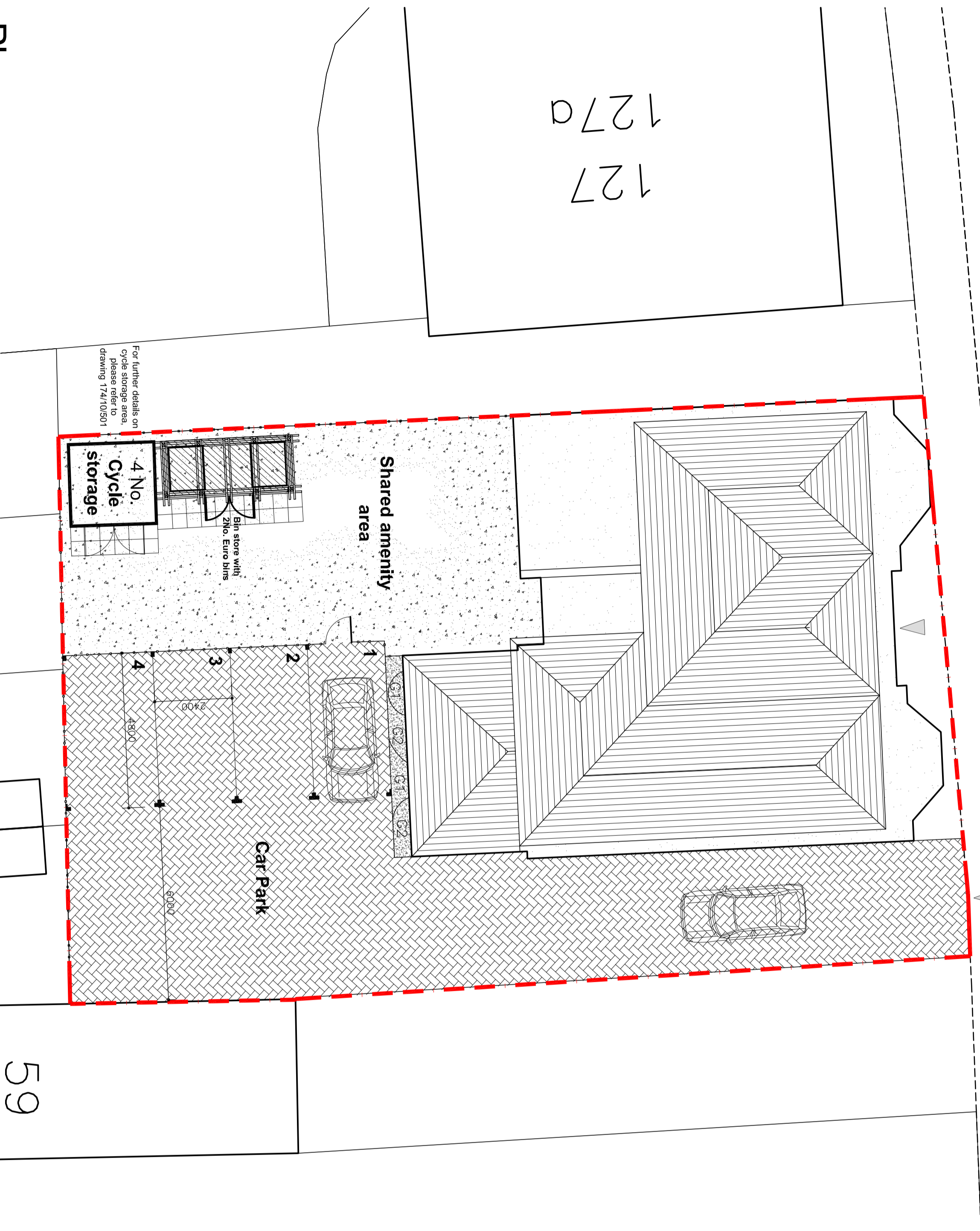
PRELIMINARY



STATION ROAD

Site Access

127
127a



For further details on cycle storage area, please refer to drawing 174/10/501

4 No. Cycle storage

Bin store with 2No. Euro bins

Shared amenity area

Car Park

LANDSCAPE KEY

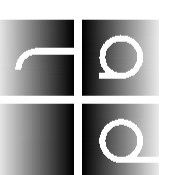
GROUND COVERS – GROUP 1 (G1)	HEIGHT	POT SIZE	CENTRE
GALLUM ODORATUM	20–30cm	1 LITRE	300
GERANIUM SANGUINEUM	20–30cm	1 LITRE	300
LAMIUM MACULATUM	20–30cm	1 LITRE	300
LYSIMACHIA NUMMULARIA	20–30cm	1 LITRE	300
GROUND COVERS – GROUP 2 (G2)	HEIGHT	POT SIZE	CENTRE
FILIPENDULA ULMORIA	20–30cm	1 LITRE	300
HEDERA HIBERNICA (HELIX 'HIBERNICA')	40–60cm	2 LITRE	600
TIABELLA CORFODIA	20–30cm	1 LITRE	300
VINCA MINOR 'ARGENTEOVARIEGATA' (V.m. 'VARIEGATA')	20–30cm	1 LITRE	300

GENERAL KEY

	GRASSSED AREA, REFER TO LANDSCAPE DRAWING.
	1.8M HIGH CLOSE BOARDED FENCE. PLEASE REFER TO BOUNDARY TREATMENT DRAWING REF 174/10/500
	SITE BOUNDARY
	ACCESS GATES
	ROAD TO BE BLOCK PAVIORS
	ACCESS POINTS

Site Plan

59



ASHBY DESIGN
L I M I T E D

FIRST FLOOR 7A, SALISBURY SQUARE
OLD HATFIELD HERTS AL9 5AD
T 01707 270 077 F 01707 270 078
W www.ashbydesign.co.uk

Project
**Railway Inn,
Hampton**

The
Site Plan
Scale
1:100 @ A2

Date
January 2011

Drawn
JB
Checked
SRH

Drawing No.
174/10/1000

Revision