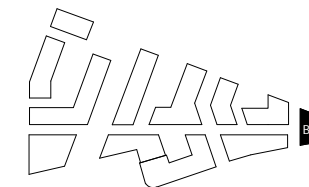
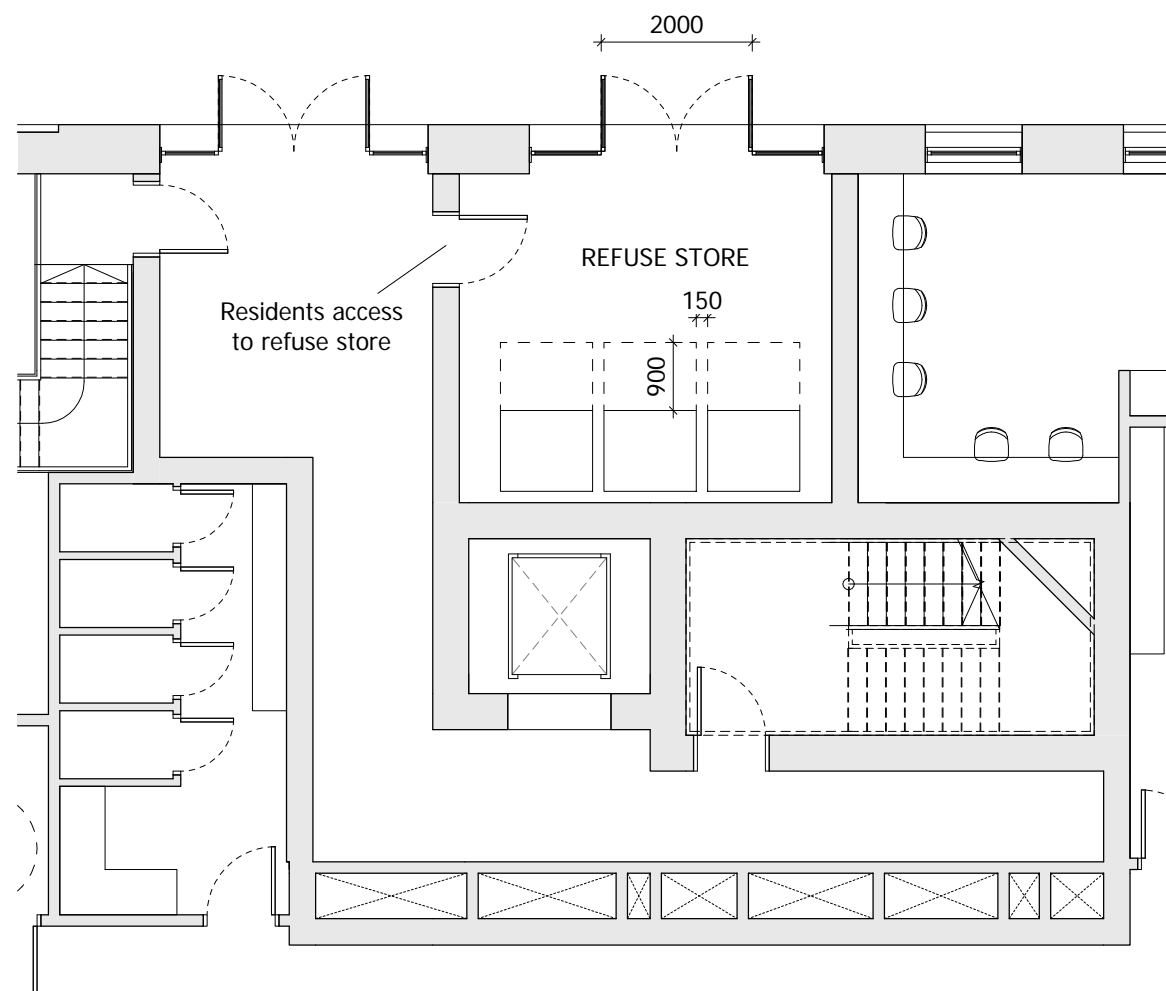


NOTES:
DO NOT SCALE FROM THIS DRAWING. ALL DIMENSIONS TO BE CHECKED ON SITE. ALL OMISSIONS AND DISCREPANCIES TO BE REPORTED TO THE ARCHITECT IMMEDIATELY.

ALL RIGHTS RESERVED. THIS WORK IS COPYRIGHT AND CANNOT BE REPRODUCED OR COPIED OR MODIFIED IN ANY FORM OR BY ANY MEANS, GRAPHIC ELECTRONIC OR MECHANICAL, INCLUDING PHOTOCOPYING WITHOUT THE WRITTEN PERMISSION OF SQUIRE AND PARTNERS ARCHITECTS.



NOTE:- Building 09 refuse store contains 3 Eurobins at 1100 Litres each. This is to serve building 09 alone.



THIRD DRAFT PLANNING APPLICATION	04/01/18	BJ	A
SECOND DRAFT PLANNING APPLICATION	09/11/17	BJ	-
Revision description	Date	Check	Rev

SQUIRE & PARTNERS

The Department Store
248 Ferndale Road London SW9 8FR
T: 020 7278 5555 F: 020 7239 0495

info@squireandpartners.com
www.squireandpartners.com

Project
Stag Brewery
Richmond

Drawing
BUILDING 09 - GROUND FLOOR
LEVEL REFUSE STORE PLAN

Drawn	Date	Scale
KHO	31/10/17	1 : 50 @ A1 1 : 100 @ A3

Job Number	Drawing number	Revision
16019	G200_B09_P_00_003	A

