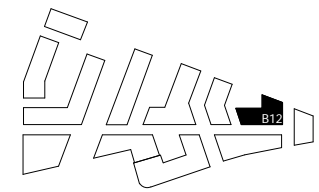
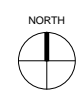
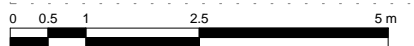
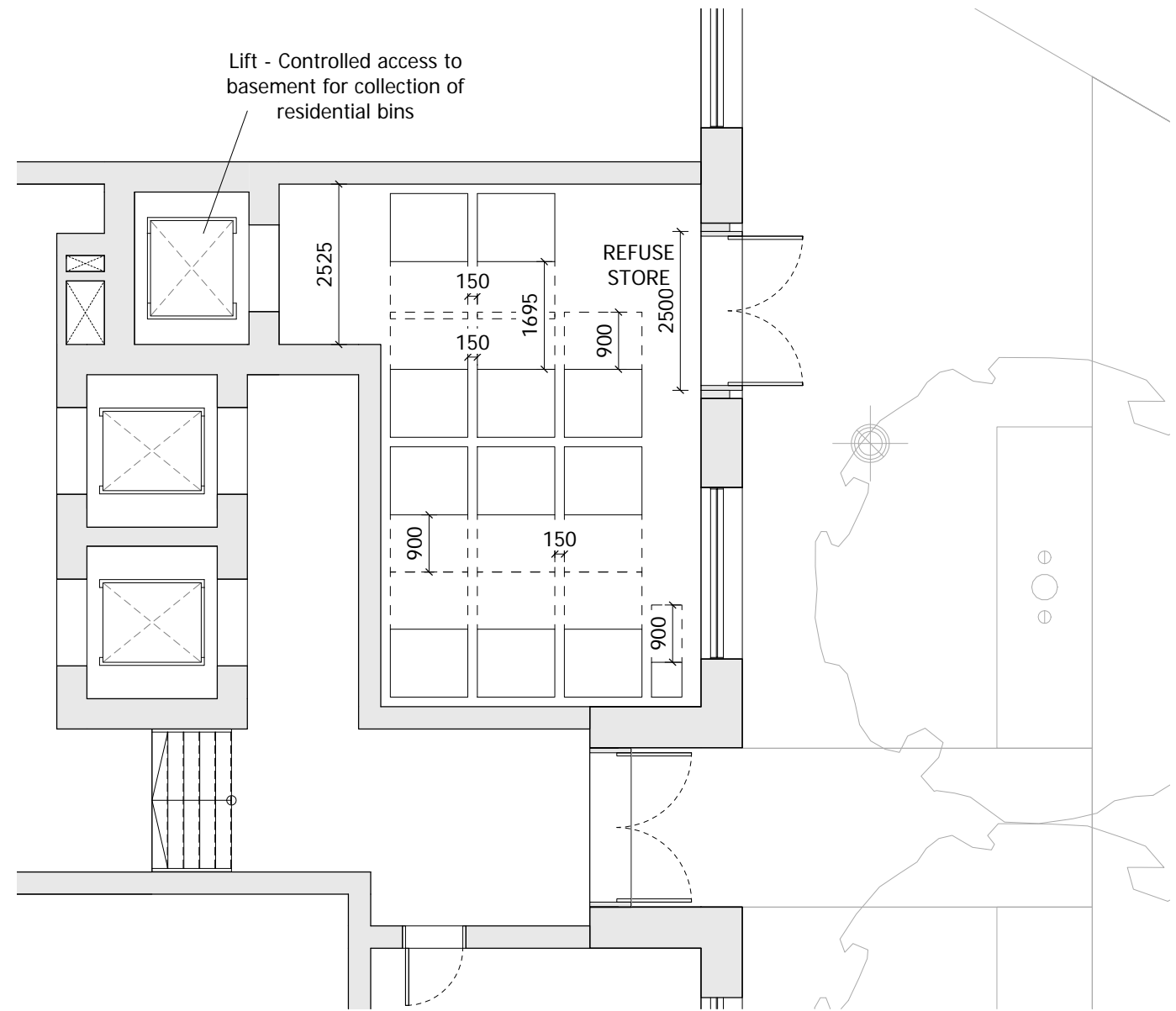


NOTES:
 DO NOT SCALE FROM THIS DRAWING. ALL DIMENSIONS TO BE CHECKED ON SITE. ALL OMISSIONS AND DISCREPANCIES TO BE REPORTED TO THE ARCHITECT IMMEDIATELY.
 ALL RIGHTS RESERVED. THIS WORK IS COPYRIGHT AND CANNOT BE REPRODUCED OR COPIED OR MODIFIED IN ANY FORM OR BY ANY MEANS, GRAPHIC ELECTRONIC OR MECHANICAL, INCLUDING PHOTOCOPYING WITHOUT THE WRITTEN PERMISSION OF SQUIRE AND PARTNERS ARCHITECTS.



NOTE:
 Building 12 refuse store contains 11 Eurobins at 1100 Litres each and a 140L Eurobin. This is to serve buildings 11 and 12.



Revision description	Date	Check	Rev
PLANNING APPLICATION	12/02/18	BJ	-

SQUIRE & PARTNERS

The Department Store
 248 Ferndale Road London SW9 8FR
 T: 020 7278 5555 F: 020 7239 0495

info@squireandpartners.com
 www.squireandpartners.com

Project
Stag Brewery
 Richmond

Drawing
BUILDING 12 - GROUND FLOOR LEVEL REFUSE STORE PLAN

Drawn	Date	Scale	@ A1
KHO	16/01/18	1 : 50	@ A1
Job Number	Drawing number	Revision	
16019	C645_B12_P_00_004	-	