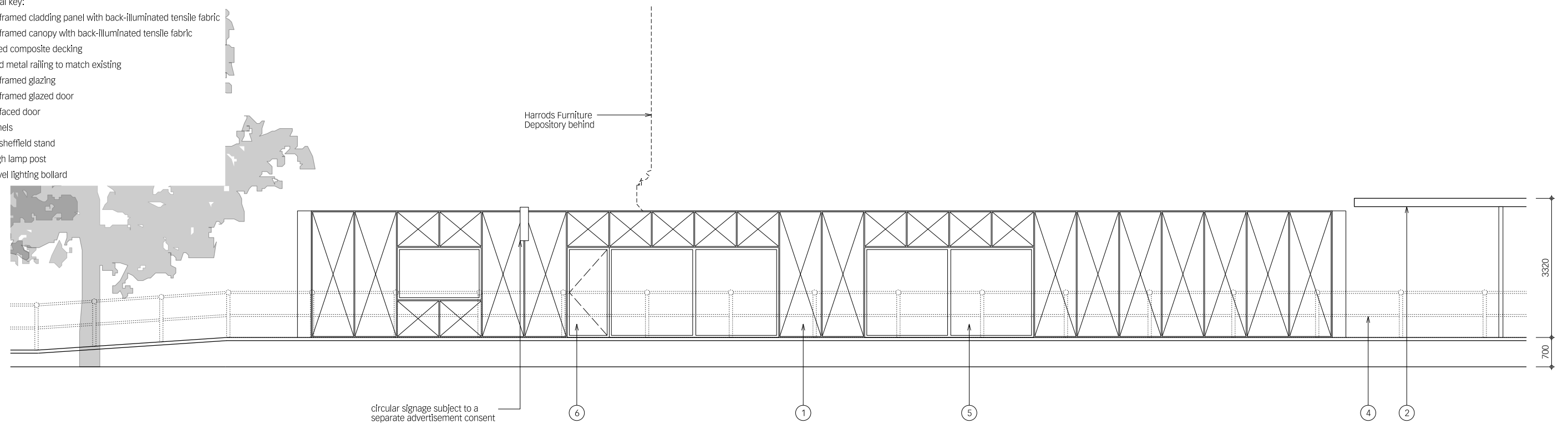
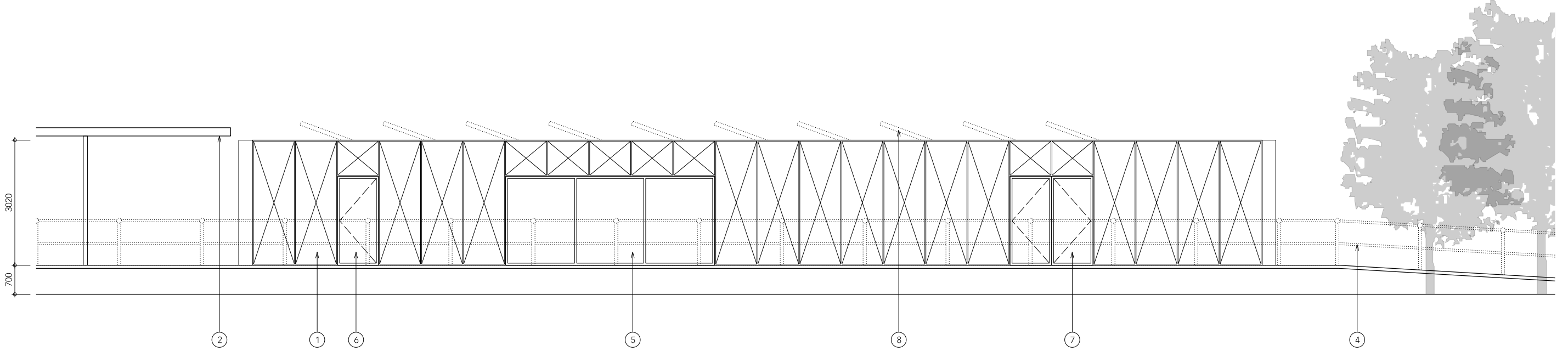


- material key:
- ① metal framed cladding panel with back-illuminated tensile fabric
 - ② metal framed canopy with back-illuminated tensile fabric
 - ③ recycled composite decking
 - ④ painted metal railing to match existing
 - ⑤ metal framed glazing
 - ⑥ metal framed glazed door
 - ⑦ metal faced door
 - ⑧ PV panels
 - ⑨ metal sheffield stand
 - ⑩ 4m high lamp post
 - ⑪ low level lighting bollard

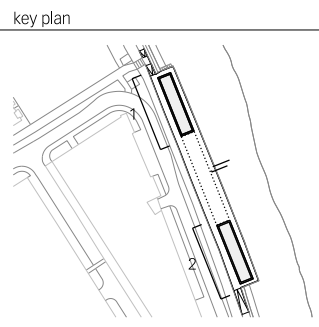


1. Pavilion 1 west elevation



2. Pavilion 2 west elevation

rev	date	by	revisions
A	21.12.20	PF	Deck level updated to accommodate foundations
B	15.01.21	PF	Deck level and access ramps updated
C	18.01.21	PF	Material key updated



notes

architect
Lifschutz Davidson Sandilands
 Island Studios, 22 St. Peter's Square, London W6 9NW T +44 (0)20 8600 4800 mail@lds-uk.com

project	Proposed pavilion elevations 02		
Harrods Wharf			
client	scale at A1	scale at A3	drawn date
Jamie Waller	1:50	1:100	RF 10.20
job no.	drawing	rev.	
1178	P1601	C	



This drawing is the property of Lifschutz Davidson Sandilands Ltd. No disclosure or copy of it may be made without the written permission of Lifschutz Davidson Sandilands Ltd.
 LDS Standard Frame V1 - 11.10