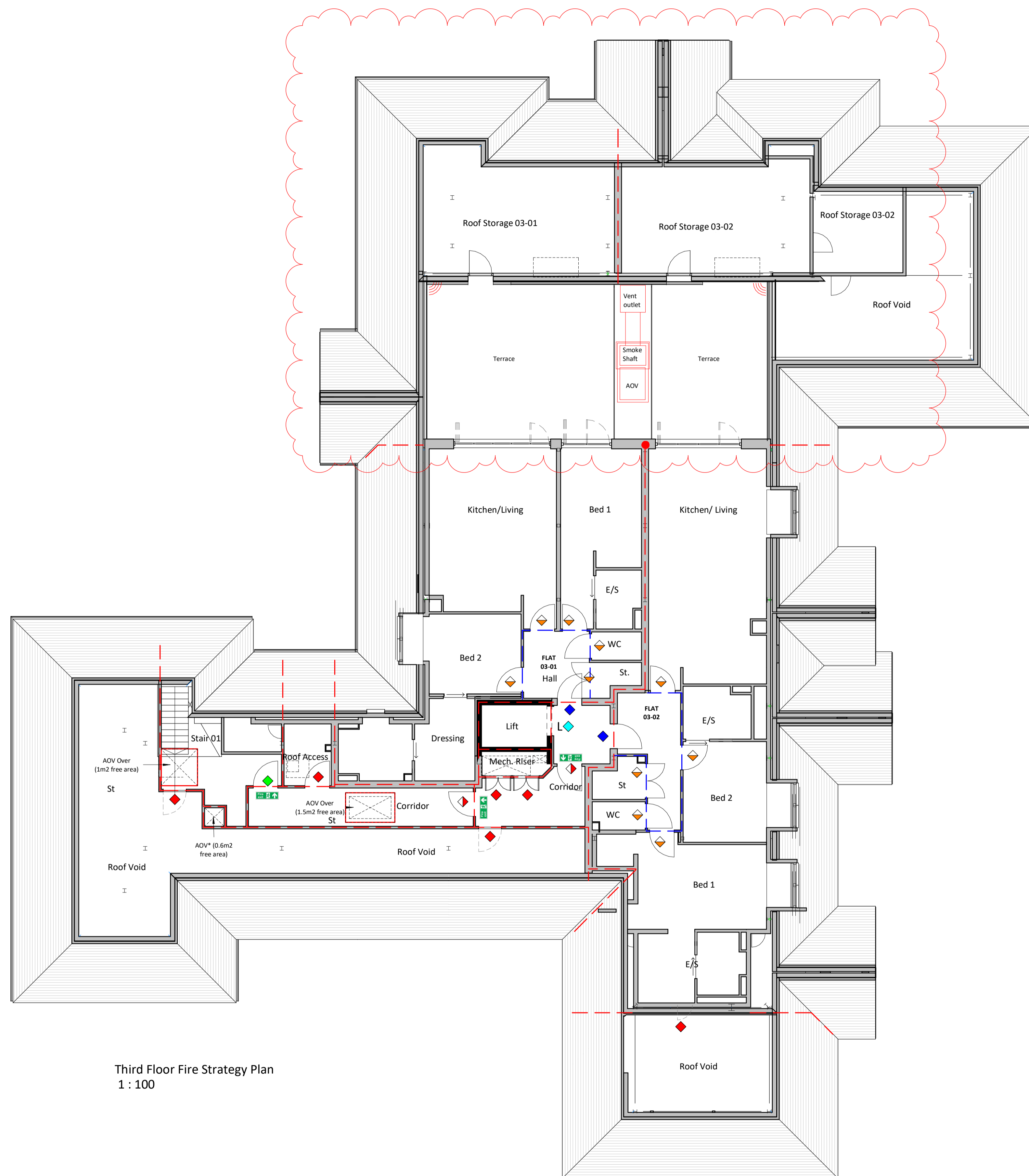


**FIRE STRATEGY LEGEND**

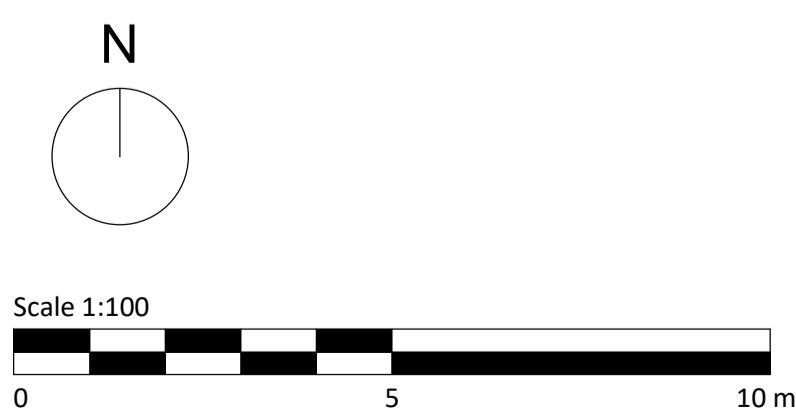
- 60 mins main compartment fire wall lines to extend fully to underside of structural floor/underside of roof covering and all junctions fire stopped including at eaves (doors 30 minutes rating).
- 30 mins fire separating wall line with walls as above
- Fire resisting glazed screen, fire rated period to match adjacent wall (integrity only)
- ➔ Final Exit
- A FD120S self closing fire door with access control 'keep locked shut' signage
- A FD60S self closing fire door with access control 'keep locked shut' signage
- ◇ FD30S fire door with free swing door closer
- ◇ FD30S self closing fire door 'Fire Door Keep Shut' signage
- ◇ FD30S fire door with 'keep locked shut' signage
- ◇ FD30S self closing fire door on hold open devices linked with alarm to release and close on activation.
- ◇ Automatic opening entrance doors and fall safe open in event of fire/ emergency.
- ◇ FD20 fire door (no closer, no intumescent strips) (intumescent ventilation grills to service cupboards)
- L One hour lift doors with smoke seals as part of lift installation.
- A FD30S self closing door with access control.
- Fire exit Position of illuminated fire exit signage
- 60Min Compartment Cavity Barrier with integral DPC
- ⦿ Beacon & sounder linked to fire alarm system
- ▨ 60Min Compartment Floor Above Ramp

**Note:** All floors to be 60min fire compartment with all penetrations to be suitably fire stopped to maintain performance

- Note:**
- To be Read in conjunction with FDS Fire Strategy Report. Deviations from the report are Refuges omitted upper floors; Dry Riser proposal will be to Stair 1 only. Pressure Switch will be required on doors to stairs (Fire Specialist Design)
  - The smaller AOV shafts \*asterisked are in fact Mechanical Smoke Ventilation System risers (MSVS) to specialist design.
  - Communal corridor doors to be held open (magnetic) linked to fire alarm for release (to M&E design & specification)
  - Final exit doors some have access control (to be co-ordinated with specialists) and to be linked to the Fire Alarm for release on operation



Third Floor Fire Strategy Plan  
1 : 100



Rev C3 - Apartment Roof Storage area updated

Rev	DESCRIPTION	DRW/CHK	Status	DATE
C3	Construction Issue Update	MN/MN	A	10/08/2021
C2	Construction Issue Update	KP/MN	A	07/09/2020
C1	Construction Issue Update	MN/MAS	A	29/06/20
T2	Updated tender issue set	MAS		22/05/20
T1	Tender Issue	MAS		28/04/20

CLIENT LOGO

**CIRC Construction Management**

ORIGINATOR	24 Church St. West, Woking, Surrey, GU21 6HT 01483 494 350 info@prc-group.com www.prc-group.com	Architecture Planning Master Planning Urban Design Interiors Landscape	Offices Woking London Milton Keynes Warsaw
<b>PRC</b>			

PROJECT  
**Mulberry Court, C102** 11177

DRAWING TITLE  
**Third Floor - FIRE STRATEGY PLAN**

BIM FILE NAME

PROJECT STAGE  
**RIBA Stage 5** FIRST ISSUE DATE  
**09/19/19**

STATUS CODE  
**A : CONSTRUCTION ISSUE** SCALE  
**1 : 100 @ A1**

PROJECT	ORIGINATOR	ZONE	LEVEL	TYPE	ROLE	NUMBER	REV
C102	PRC		03	DR	AR	30005	C3