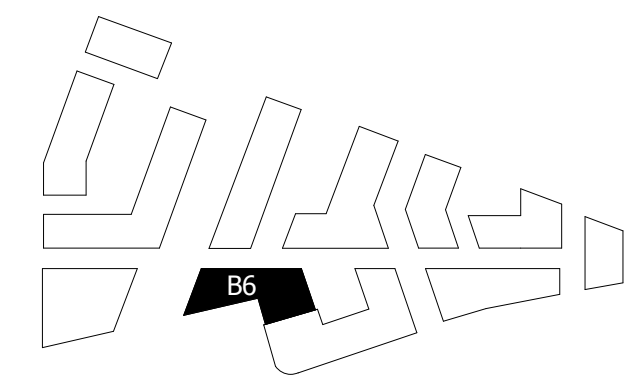
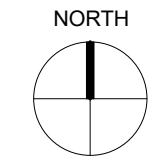


NOTES:

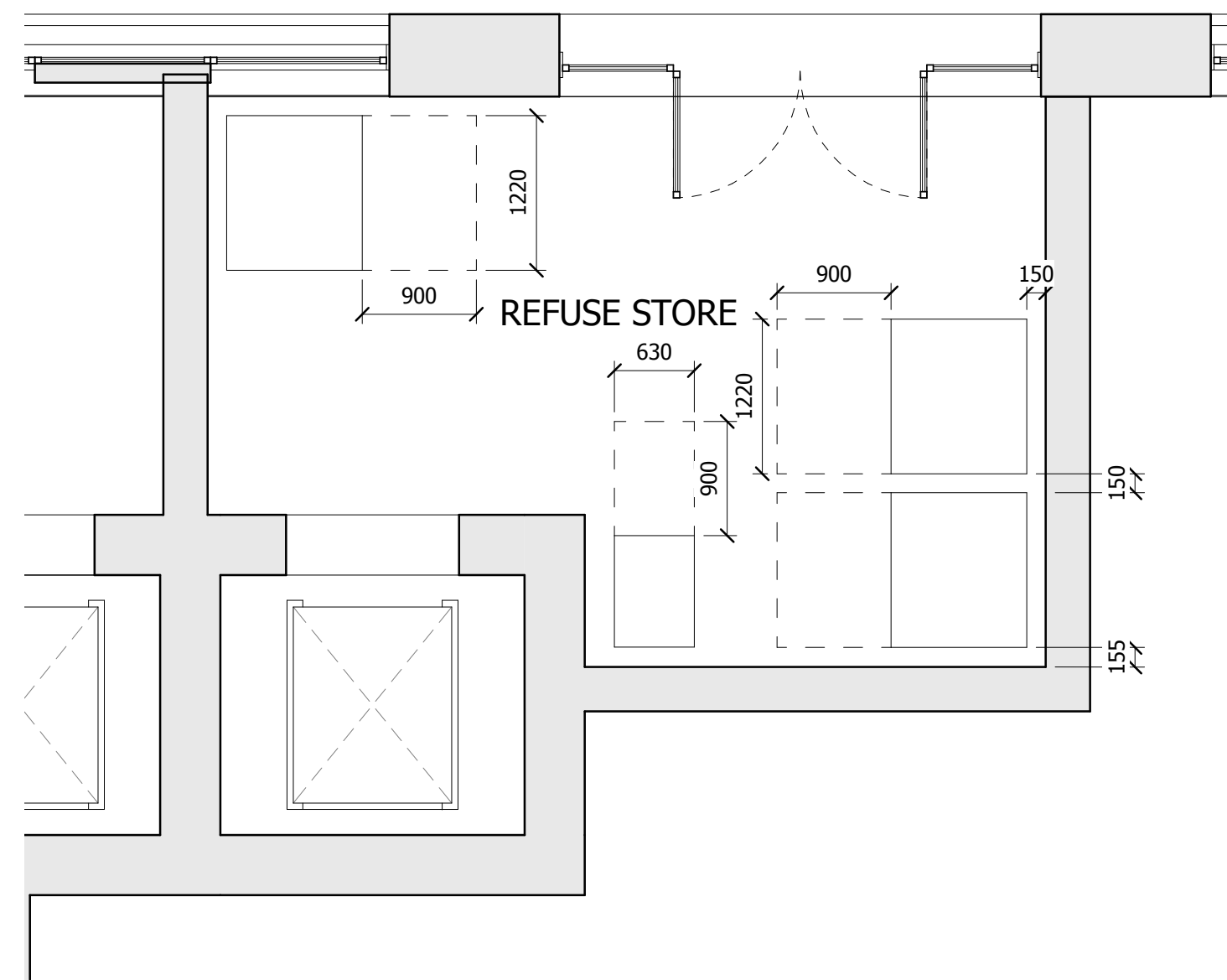
DO NOT SCALE FROM THIS DRAWING. ALL DIMENSIONS TO BE CHECKED ON SITE. ALL OMISSIONS AND DISCREPANCIES TO BE REPORTED TO THE ARCHITECT IMMEDIATELY.

ALL RIGHTS RESERVED. THIS WORK IS COPYRIGHT AND CANNOT BE REPRODUCED OR COPIED OR MODIFIED IN ANY FORM OR BY ANY MEANS, GRAPHIC ELECTRONIC OR MECHANICAL, INCLUDING PHOTOCOPYING WITHOUT THE WRITTEN PERMISSION OF SQUIRE AND PARTNERS ARCHITECTS.



NOTES:

Building 06 refuse store contains 3 Eurobins at 1100 Litres each and 1 360L Eurobin. This is to serve building 06 alone.



LBRUT 2 APPLICATION	04/02/22	BJ	D
GLA SUBMISSION	27/04/20	BJ	C
DRAFT GLA SUBMISSION	24/01/20	KH	B
FINAL DRAFT PLANNING APPLICATION	21/10/19	KH	A
LEGAL REVIEW	13/09/19	KH	-

Revision description	Date	Check	Rev

## SQUIRE & PARTNERS

The Department Store  
248 Ferndale Road London SW9 8FR  
T: 020 7278 5555 F: 020 7239 0495

info@squireandpartners.com  
www.squireandpartners.com

Project  
**Stag Brewery**  
Richmond

Drawing  
**BUILDING 06 - GROUND FLOOR**  
**LEVEL REFUSE STORE PLAN**

Drawn	Date	Scale
KHO	13/09/09	1:50 @ A1 1:100 @ A3
Job Number	Drawing number	Revision
18125	C645_B06_P_00_002	D

