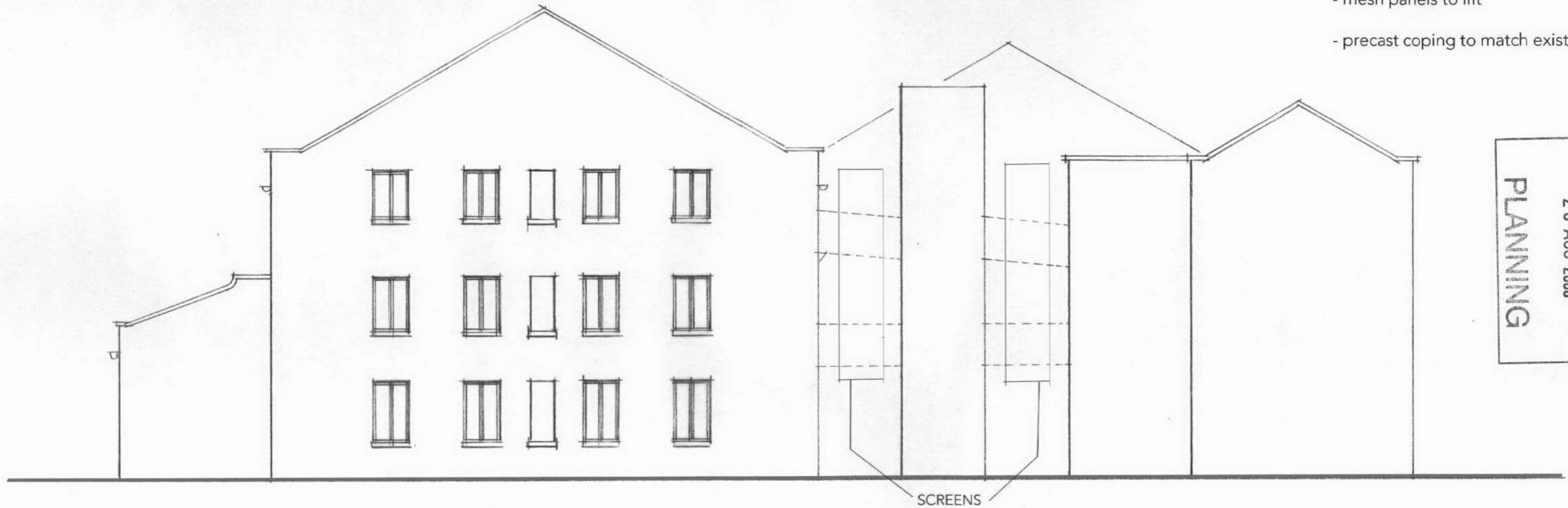


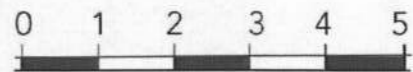
Materials

- new facing brickwork to match existing buildings
- new metal windows
- recessed brickwork panel
- mesh screens
- mesh panels to lift
- precast coping to match existing



RECEIVED  
26 AUG 2008  
PLANNING

08/2870/FUL



**WEST ELEVATION AS PROPOSED**

PL120

37 HAMILTON ROAD TWICKENHAM 3903  
PLANNING APPLICATION scale 1:100  
August 2008

ACANTHUS LW  
ARCHITECTS

Voyssey House, Barley Mow Passage, London W4 4PN  
020 8994 2288 F: 020 8747 9001 www.acanthuslw.com